

Titus+

Push Latch S2

Soft push opening system
for handleless cabinet doors



Engineered for soft and silent push opening of handleless cabinets

With the Push Latch S2, we are introducing a push opening system for handleless cabinet doors with a noiseless, bounceless and soft opening action. It is compatible with damped and non-damped hinges, provides a consistent push-to-open action, and reliable door closing.



Soft and silent



Safety detachment



Depth adjustment



**Compatible with damped and
non-damped hinges**



Second generation of Titus push opening system

Smooth performance

Push Latch S2 incorporates a damping system which controls the outward motion triggered by a push, making the door opening determined yet still soft, silent, and bounceless. The door closing is confident, reliable, and always right the first time.

Intuitive mounting

The positioning lip on the mounting plate assures accurate placement of the mechanism on the cabinet.

Safety assured

Push Latch S2 has an integrated safety feature, which allows the mechanism to easily detach from its mounting plate in case of an accidental hit. After being detached, the mechanism can easily be reattached maintaining its original performance.

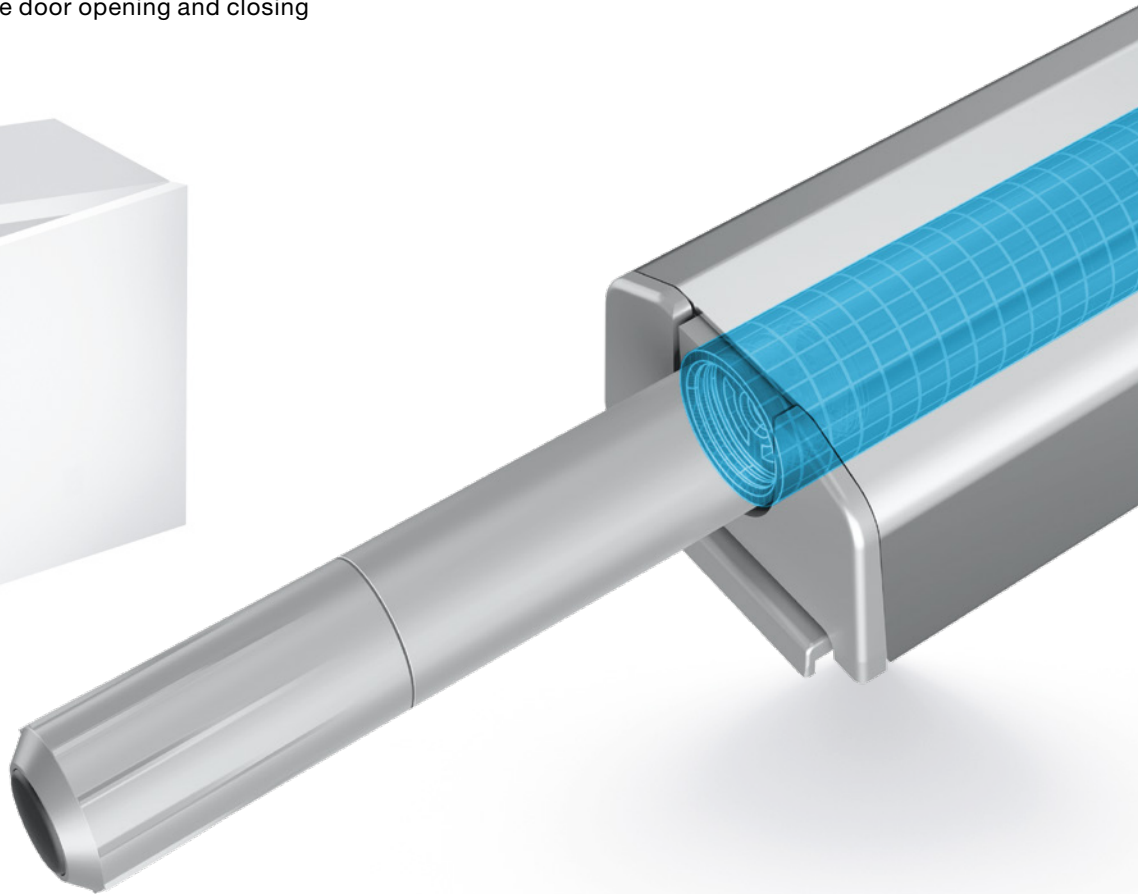
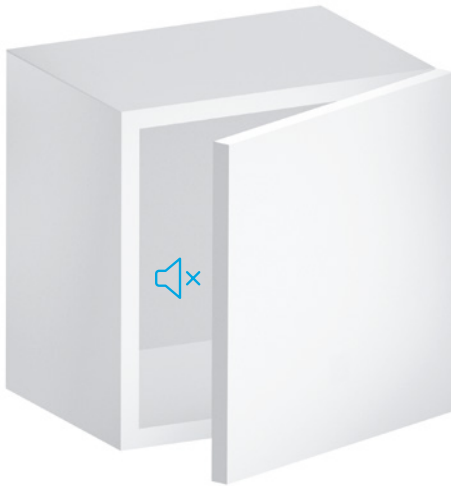
Consistent push opening

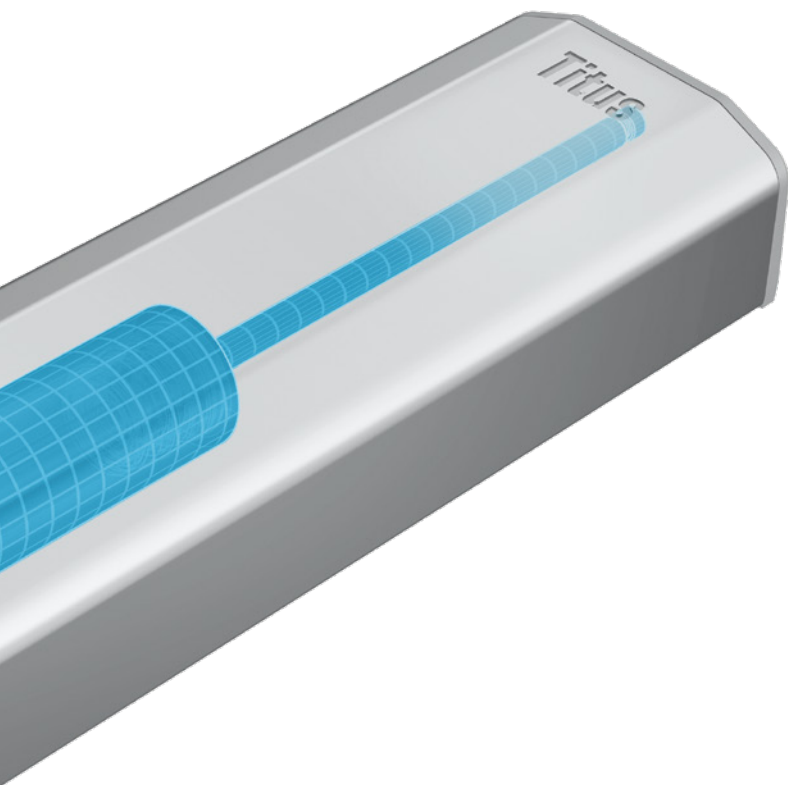
This mechanism is compatible with self-closing hinges with and without damping, and fits standard drilling patterns. With the use of a non-removable depth adjustment button, an optimal door-to-side panel gap can be achieved, ensuring consistent performance on different door sizes and weights.



Soft and silent

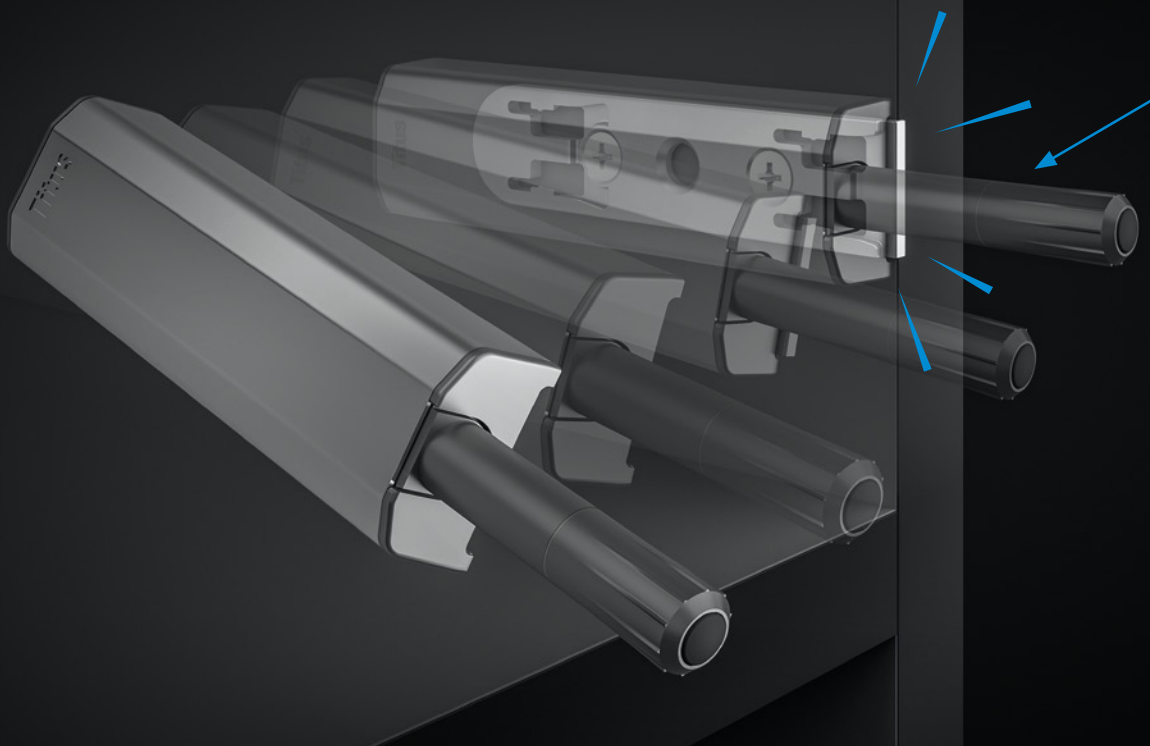
- Enhanced opening and closing performance controlled with an integrated damping system
- Bounceless and reliable door opening and closing
- Noiseless door landing





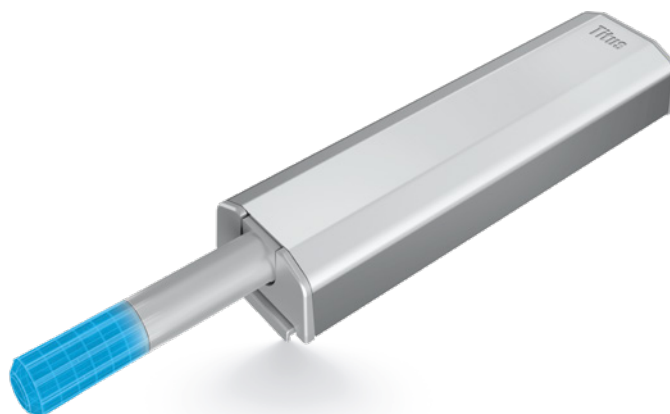
Titus hydraulic damping technology

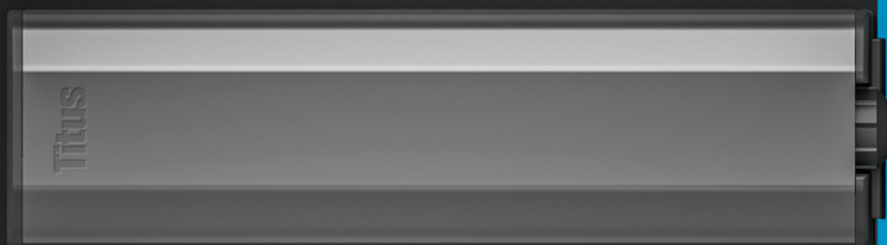
The Push Latch S2 features Titus Damper Inside, our proprietary multipurpose damping technology. It ensures **force and performance consistency**, and a **fully controllable damping action**.



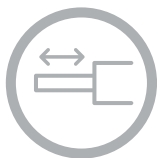
Safety detachment

- In case of an accidental hit, the mechanism detaches from the mounting plate
- The mechanism can be easily reattached
- Non-removable depth adjustment button reinforces the safety



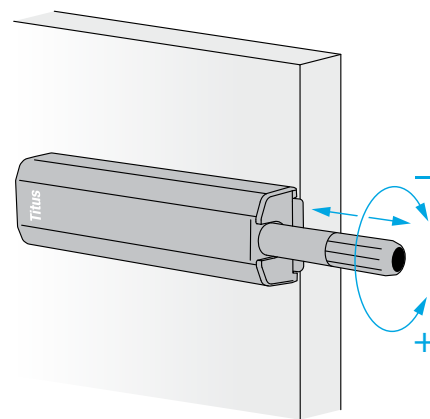


minimum activation gap required 2mm



Depth adjustment

- With the depth adjustment button, the user can precisely define a door-to-side panel gap
- Consistent and reliable performance in all applications
- Enables even alignment of cabinet fronts

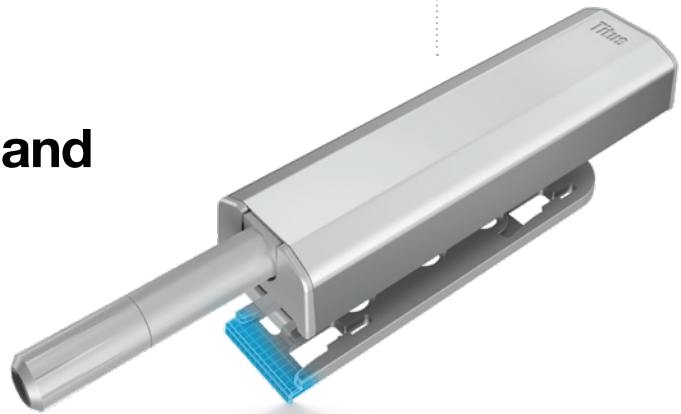


Adjustment range -1mm / +4mm



Compatible with damped and non-damped hinges

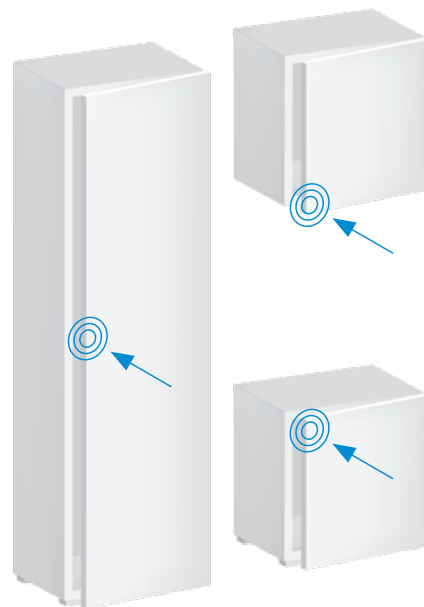
- Simple, versatile and user-friendly
- Mounting plate with the positioning lip assures comfortable and accurate positioning
- Smooth and reliable performance assured



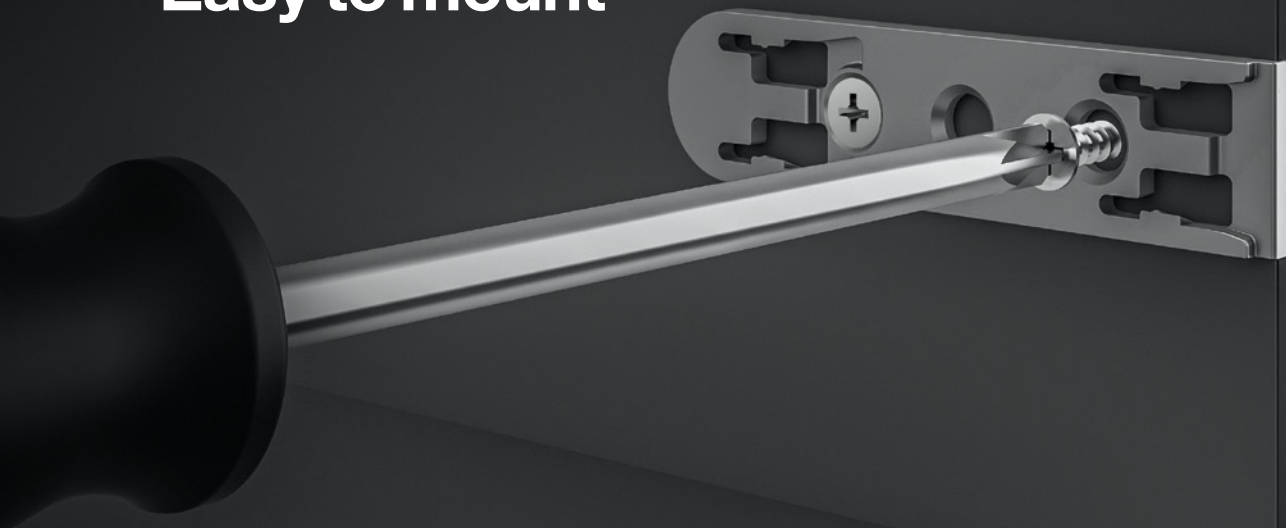


Positioning

For optimal performance, the mechanism should be positioned near the 'push opening point' on the cabinet side opposite the hinges.

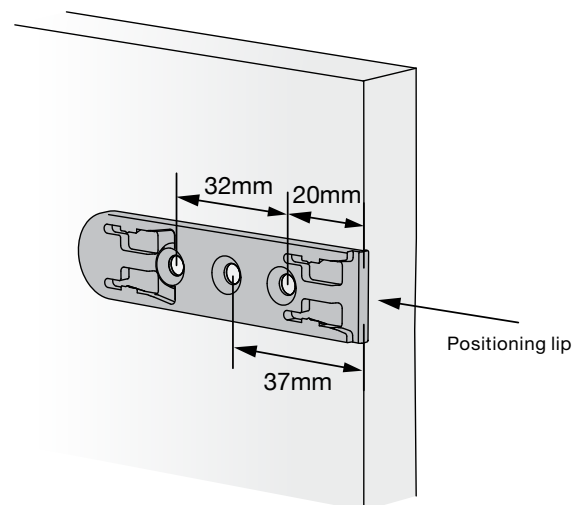


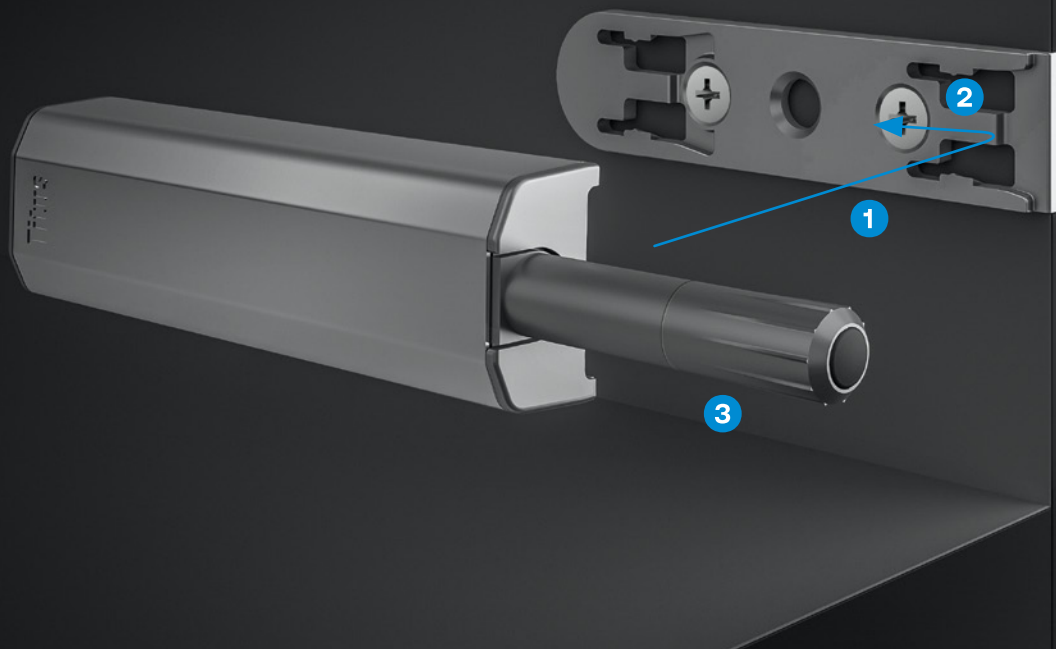
Easy to mount



Mounting plate fixing

- The mounting plate fits standard 37mm and 20mm drilling patterns
- If the cabinet side is not predrilled, the mounting plate's positioning lip can serve as a guide to ensure precise placement of the mechanism

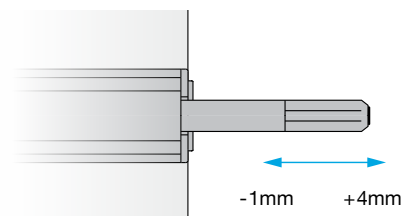




Push Latch S2 mounting

Once the mounting plate is installed, the push latch can be easily mounted.

- 1 Place the push latch over the mounting plate.
- 2 Push it back to lock it into position. Once it clicks, the mechanism is correctly mounted.
- 3 Adjust the door-to-side panel gap through the adjustment button.



Engineered for Purpose

Titus is committed to providing its customers with products and services that improve their competitiveness, while reducing manufacturing and assembly costs.



Titus Group / titusplus.com

