

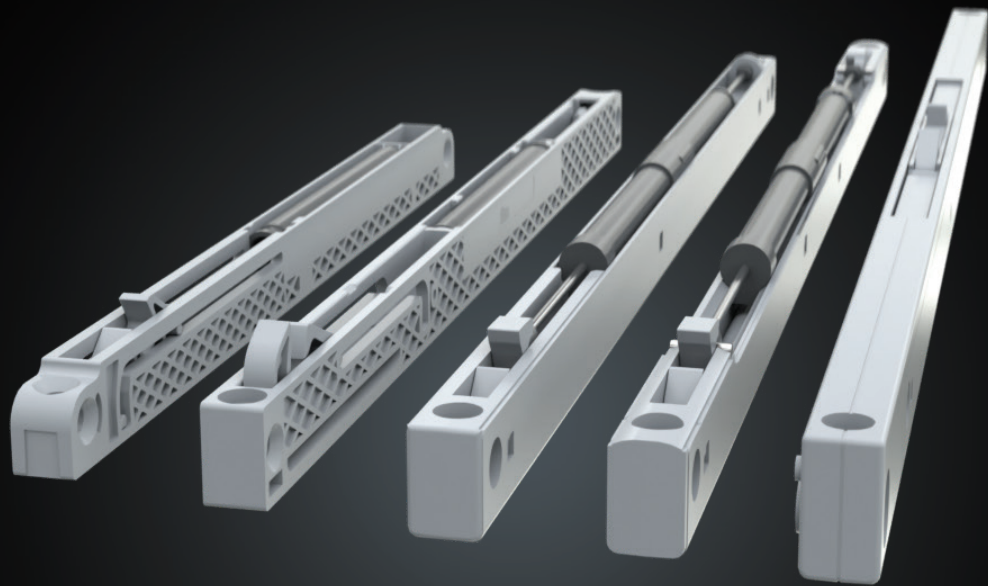
Titus+



# Titus Slidix

A comprehensive range of innovative  
damping solutions for sliding door systems

- Consistent performance
- Comfortable door opening
- Fully controllable damping curve
- Quick development of custom solutions



# Titus Slidix

A comprehensive range of damping solutions for applications in internal sliding door systems, wardrobes and refrigerators.

With hydraulic damping technology it offers a fully controllable damping curve, defining forces and their distribution very precisely over the whole damping action.

The damper's stroke assures efficient damping at any closing speed, providing consistent performance over any application from 5kg to 120kg with smooth soft closing and reduced rebound.



## Consistent performance on doors from 5 to 120 kg

- Consistent and reliable damping at any closing speed
- The door will close even at minimum speed



## Comfortable opening

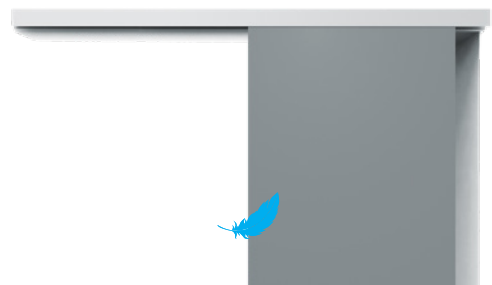
Effortless opening of doors





## Fully controllable damping curve

- Ability to fine tune performance to specific applications
- Smooth and even soft closing action on various door dimensions and weights
- Closing is smooth and soft at the last stage of damping which results in silent closing without a rebound



# Quick development of custom solutions

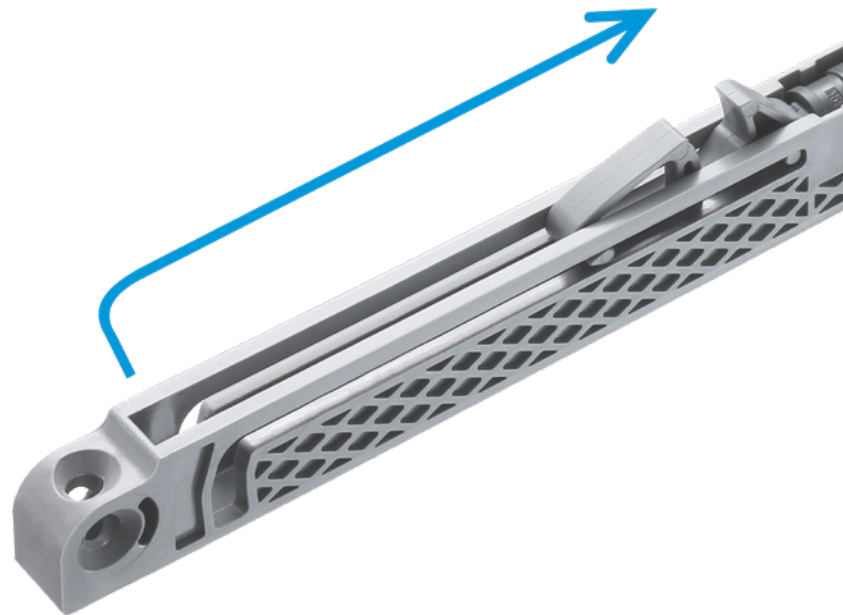
- Slidix can be easily customized to meet specific customer requirements for weight, friction and speed
- Its compact design can accommodate dampers of various forces and strokes
- It reliably performs in temperature as low as -30°C

## Characteristics

**Flat, progressive, MultiStage, with final release, ART\***

\* Adaptive Response Technology (ART) allows the damper to adapt to weight and closing speed of object and adjusts the damping force accordingly

**Damper stroke**  
**50mm, 75mm, 100mm**





Damper force  
**2.5N-22.5N**

Temperatures  
**-30 °C to +70 °C**

**>>> Titus  
damper  
inside <<<**

### Titus hydraulic damping technology

Titus Slidix products features Titus damper inside, our proprietary multipurpose damping technology. It ensures **force and performance consistency, and a fully controllable damping action.**





Operating temperature range  
**-30°C to +70°C**

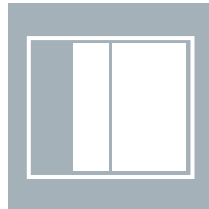


# Wide range of applications

## Furniture



Wardrobes with 3 or more doors

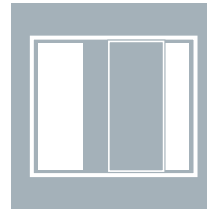


2-door cabinets



Walk-in closets

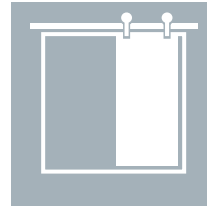
## Interior sliding doors



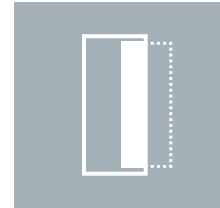
Sliding doors



Wall partitions

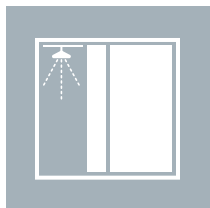


Barn doors



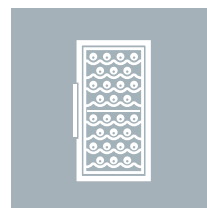
Pocket doors

## Bathroom

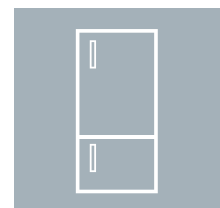


Shower doors

## Home appliances

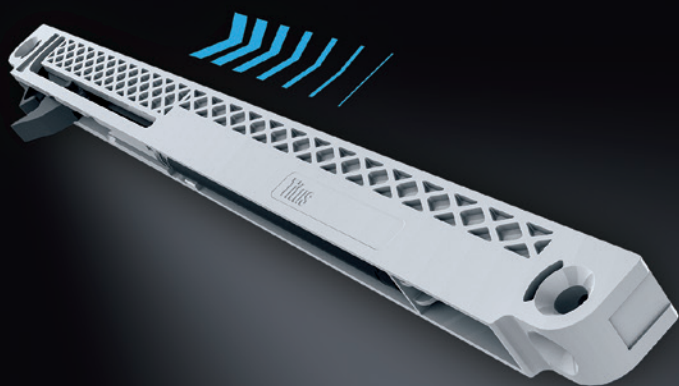


Winecooler

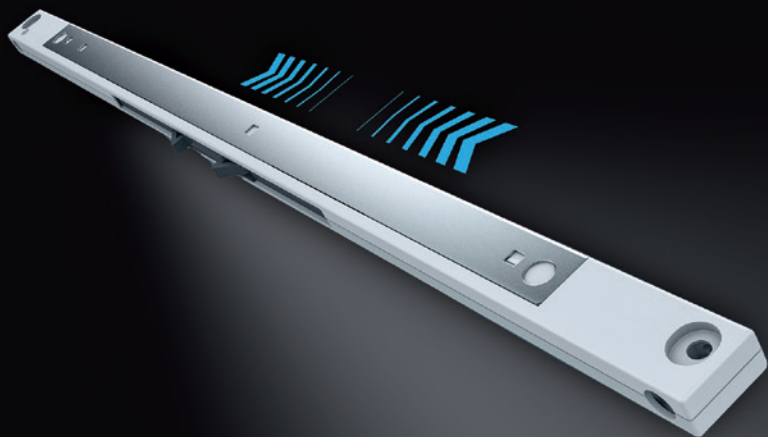


Refrigerator

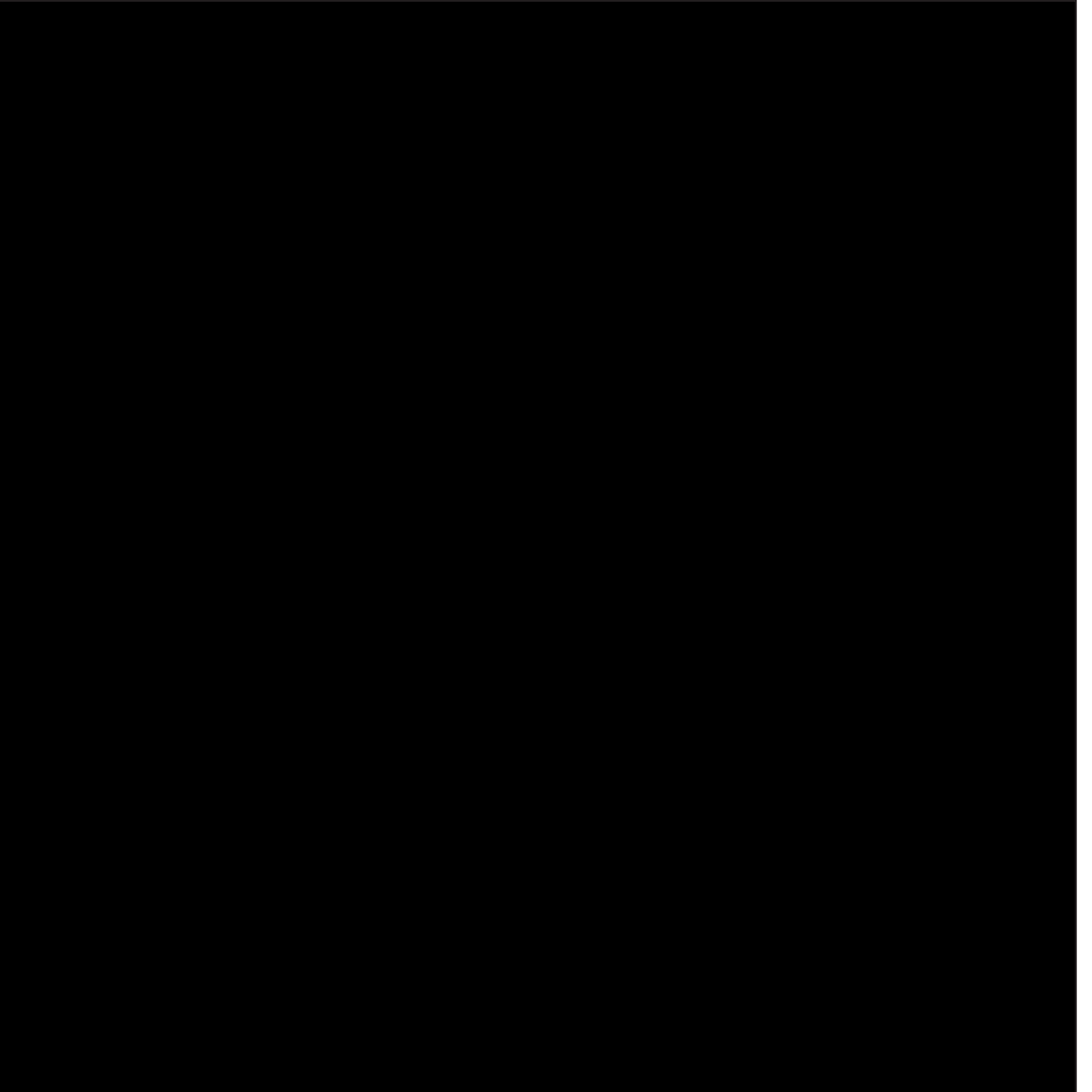
# Technical characteristics



Product	Slidix II	Slidix TE
Damping stroke (mm)	50	50
Load capacity (kg)	15-80	15-60
Damping force (N)	from 2.5N to 17.5N	from 2.5N to 12.5N
Spring force (N)	from 4.3N to 17N	from 4.3N to 17N
Housing lenght (mm)	237	298
Operating temperature	0°C to 40°C (32°F to 104°F) -30°C to 0°C (-22°F to 32°F)	0°C to 40°C (32°F to 104°F)



Slidix TA	Slidix TF	Slidix Centro
100	100	50
40-120	40-120	15-40
from 2.5N to 22.5N	from 2.5N to 22.5N	from 2.5N to 10N
from 10N to 17N	from 4.3N to 17N	from 9N to 15N
370	403	465
0°C to 40°C (32°F to 104°F)	0°C to 40°C (32°F to 104°F)	0°C to 40°C (32°F to 104°F)



# Engineered for Purpose

Titus is committed to providing its customers with products and services that improve their competitiveness, while reducing manufacturing and assembly costs.



**Titus Group / [titusplus.com](https://titusplus.com)**

