

# PressRelease



[info@titusplus.com](mailto:info@titusplus.com)

September 2024

**Titus furniture hardware presents innovative solutions designed to simplify the assembly process, resulting in significant time and effort savings.**

**Discover our latest innovations Engineered for Easy Assembly at SICAM Pordenone from 15-18 October 2024**

Visitors to the **Titus stand B44/C45, in hall 2**, will have the opportunity to experience the advantages of the Titus' flagship T-type hinge family, designed for quick assembly and consistent lifetime performance. Now with a tool-free hinge cup fixing system for fast and easy mounting along with the exceptional stability of the recent T-type-i 170-degree hinge with integrated damper effective for tall doors. Other novelties include the new Push Latch S2 for noiseless opening and confident bounceless door closing; the Quickfit TL5 'Full Metal Jacket' dowel range for strong and secure connection; and the Tekform Slimline Tacto, effortless touch opening system on drawers. In the area of custom damping solutions, the highlight is the new damper for cold environments, demonstrating Titus' commitment to providing custom damping solutions to various industries.

## **T-type hinge family - Designed for a lifetime of consistent and reliable performance**

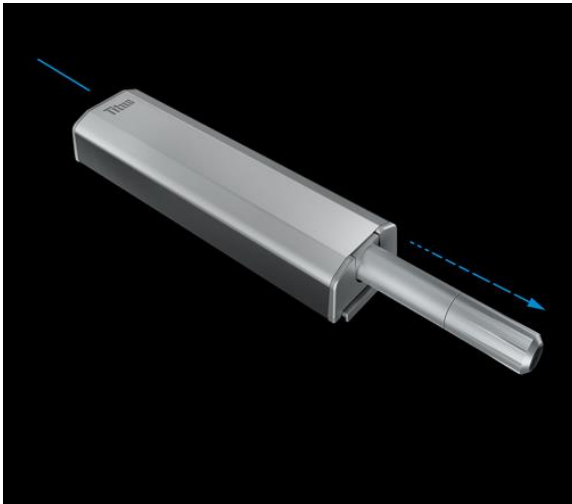


**The T-type hinge**, featuring a robust design with an integrated damping mechanism, delivers reliable soft closing and consistent performance for up to 200,000 cycles throughout its lifetime. This is particularly significant for thicker and heavier cabinet doors that are prone to sagging. The latest addition to the T-type product range is **T-type PressTo hinge** featuring toolless hinge cup fixing for an effortless and now even faster hinge installation. This innovative hinge cup securely attaches the hinge to the cabinet using manual pressure, eliminating the need for additional tools.

An effective option for tall doors is the **new T-type-i 170°** hinge version with an

integrated Titus damper. It offers exceptional stability and full accessibility to the cabinet within the storage space. Its wide opening angle, coupled with a 'zero protrusion' design makes it an optimal solution for kitchen pantry units with inner drawers. The T-type is available in two trendy finishes – Noir and TeraBlack and is designed to offer **3Way snap-on** intuitive hinge-to-plate mounting and **ConfidentClose**, the consumer-preferred way of soft closing the door: fast closing, late start of deceleration action and quiet landing with SoftTouch.

### Push Latch S2 – Solution for effortless push opening of handleless cabinets



The second generation of Titus push opening system for handleless cabinet doors provides noiseless opening and consistent soft landing on a wide range of doors.

The **Push Latch S2** mechanism incorporates damping feature that controls the outward motion generated by a push action, resulting in a decisive but soft door opening free of any rebound. The door closing is confident, reliable, and consistent from the first time.

The door-to-side panel gap adjustment guarantees accuracy and reliability of performance across all applications.

**Safety in use** is ensured with the firmly fixed adjustment button, which features a safety detachment function designed to prevent accidental removal.

### Quickfit 'Full Metal Jacket' - Connector technology engineered for easy assembly



**Quickfit 'Full Metal Jacket'** is a high-performance Quickfit connector family with greater resistance to dowel pull-out, providing optimal strength and effective performance in multiple wood-based materials, including MDF, chipboard and solid wood. **Quickfit TL5 dowel** is developed to make cabinet assembly fast and easy with tool-free insertion. Its unique expandable metal sleeve is the main feature that provides reliable engagement in a 5mm dowel hole, allowing for the incorporation of Quickfit dowel insertion technology across a wide range of applications in RTA furniture where 5mm drilling is the standard.

As a result, the use of this dowel ensures the maintenance of rigid furniture construction that doesn't loosen with age, showing high resistance to torsion and dowel pull-out.

## System 6.2 - Second generation of face-boring connectors for fast and flexible cabinet assembly

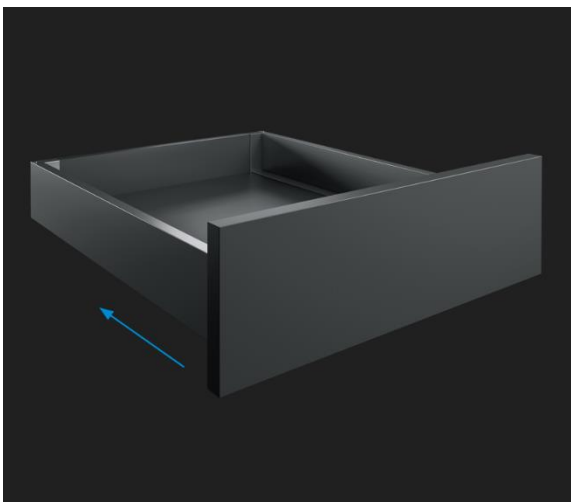


**New Titus System 6**, featuring a square shape, ensures easy and accurate knock-in insertion with comfortable tightening, resulting in high-performance joint and sturdy cabinet construction. This face-boring-only connector is typically used for wardrobes and closets that require the continuous building of segments in limited space.

Assembly has never been that easy with the use of a tool-free Quickfit dowel, as it provides ultimate onsite flexibility. Its push-in design significantly simplifies and speeds up the installation process, keeping users free to change their cabinet design at any time. This feature is particularly useful if the shelf needs to be moved, or the

dowels are inserted into the wrong hole. The square shape offers an enhanced look to the furniture with less prominent hardware, which doesn't need to be hidden. Thanks to its specific technical and design solutions, it enables higher competitiveness and an efficient manufacturing process.

## Tekform Slimline+ Drawer – Precision and innovation combined



Introducing the Tekform Slimline+ drawer, the next generation in the Tekform drawer family, now featuring a three-dimensional front adjustment mechanism for precise and effortless alignment. With enhanced front panel engagement for quick assembly, the Slimline+ drawer offers improved functionality and ease of use.

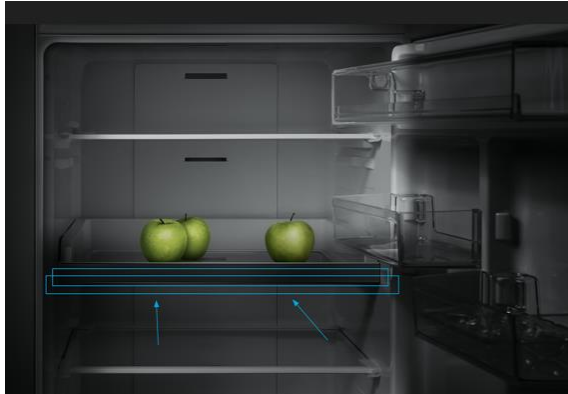
Equipped with Titus' latest damper technology and **Adaptive Response Technology (ART)**, the Slimline+ ensures smooth, consistent soft-closing performance, adapting seamlessly to any closing speed. It also supports the Tacto push-to-open function, offering a handle-

free opening experience that aligns with modern furniture trends.

The Slimline+ drawer embodies Titus' 'One-For-All' principle, using a single runner for both standard and push-to-open applications, simplifying stockholding and logistics. Its innovative design allows for easy retrofitting of the Tacto mechanism without pre-drilling, making it versatile and user-friendly for a range of cabinet designs.

Building on the strengths of previous generations, the Slimline+ maintains its sleek 14mm drawer sides and tool-free EasyFix front panel connector, while enhancing its performance for today's demanding interiors.

## Damping innovations and Adaptive Response Technology (ART) – Expanding performance and versatility (-30°C to 150°C)



Titus continues to push the boundaries of damping technology with recent innovations that deliver enhanced performance across a variety of applications. Our new, more compact damper designs offer high-performance damping in limited spaces. We have also upgraded our dampers to handle extremely high forces from heavy loads or long closing paths, suitable for products like toilet seats, drop-down doors, and waste bins.

Our innovations extend the temperature range of our dampers, ensuring reliable operation in both cooler and hotter conditions with temperature range spanning from -30°C to 150°C, which is particularly beneficial for ovens, refrigerators, automotive, and aircraft industries. Additionally, our latest developments in damping curve types, such as the multi-stage curve to eliminate bounce and reverse damping for limited spaces, have been well received by consumer appliance manufacturers, including producers of ovens and kitchen hinges.

Our **Adaptive Response Technology (ART)** further refines damper performance by adjusting to the door's weight and speed, providing smooth and quiet operation while preventing damage from slamming or sudden stops. ART dampers offer a wide damping range, allowing a single damper to accommodate various door weights while maintaining low opening forces. This versatility extends the lifespan of sliding doors, providing manufacturers with a reliable solution for a wide range of applications, including customised damping times for sliding doors based on their specific weight, speed, and required damping intensity.

By minimising impact forces, ART technology not only protects doors and components but also enhances user comfort, ensuring a consistently smooth and reliable experience.

## Slidix Family: Advanced Damping Solutions for Sliding Systems Across Multiple Industries



The **Slidix family** offers a comprehensive range of **damping solutions** designed for a variety of internal sliding door systems, wardrobes, and drawer applications. Featuring Titus' hydraulic damper technology, Slidix provides fully controllable damping action, enabling precise tuning to specific applications and ensuring consistent performance across a wide range of door weights (5 to 120 kg) and materials such as wood, glass, and plastic.

The Slidix system's compact design allows for easy integration with minimal impact on the application, requiring fewer adjustments to fit different door configurations. Its low

temperature sensitivity ensures reliable performance even in extreme conditions, and its combination of spring and damping forces delivers a comfortable opening experience with minimal effort. The range includes damping strokes of 50mm or 100mm, tailored to ensure efficient damping at any closing speed.

**The Slidix Centro mechanism** is designed for mid-door soft closing and centring functionality. Its standout feature is the integration of Titus hydraulic damper technology, which ensures reliable soft closing in both directions, consistent performance across closing speeds, and smoother soft closing with reduced re-bounce.

Furthermore, this system reduces the effort required to open the door, guaranteeing a user-friendly and comfortable experience. Slidix Centro can be easily customised to align with specific customer requirements concerning weight, friction, and speed. Its compact design accommodates dampers of various forces, enabling optimal soft closing on doors weighing between 15 and 40kg. For furniture manufacturers, the compact size reduces its impact on design, obviating the need for substantial adaptations. Notably, Slidix Centro features a dedicated activator that seamlessly integrates with other Slidix mechanisms, creating a comprehensive suite of soft-closing solutions suitable for large wardrobes with three or more doors.

### Set 200s – Efficient Sliding Door System for Wardrobes and Cabinets

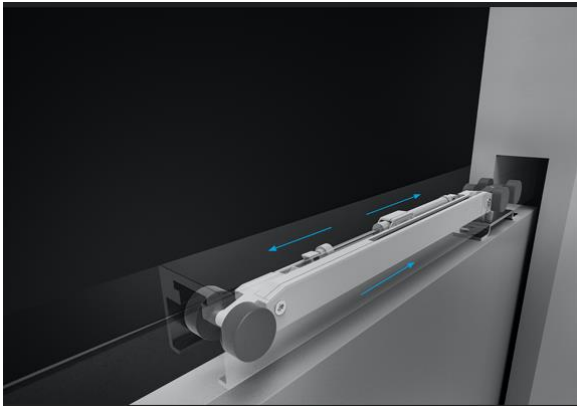


**Set 200s** is a sliding door system that ensures smooth and reliable soft closing for wardrobes and built-in cabinets with two or three doors. Its quick and intuitive installation requires no pre-drilling, thanks to the simple top carriage design, and the height-adjustable bottom carriage enables easy levelling on uneven floors. The system's soft closing activator integrates seamlessly with the Slidix system, providing consistent damping and a smooth, uniform running experience.

Set 200s is particularly well-suited to configurations with middle doors, where the combination of **Slidix Centro** and Adaptive Response Technology (ART) ensures optimal performance. ART adapts to different closing speeds, delivering controlled movement, effortless opening, and lifelong consistent damping for enhanced user convenience.

Together, the Slidix family and Set 200s offer a versatile, high-performance solution for sliding doors, wardrobes, and a variety of other applications, ensuring smooth operation and user satisfaction.

## PushTrio – Integrated push opening and damping for pocket doors



Introducing the new Titus **PushTrio** pocket door system, combining push opening and damping functions in a single, compact mechanism to ensure effortless opening and reliable closing of interior pocket sliding doors.

- Fully concealed doors flush with the wall
- Consistent, reliable damping in both directions
- Easy door release with a light push
- Customisable to meet specific needs

The PushTrio system allows pocket doors to retreat fully into the wall, creating a clean, open passageway. With a slight push, the doors close smoothly and quietly, thanks to integrated damping in both directions. The system's modular design enables easy customisation and fine-tuning, making it an ideal solution for applications where aesthetics matter, such as pantry units and other handle-free sliding systems.

### Titus Group

Titus Group, the UK-owned company, develops, manufactures, and markets innovative precision component solutions that improve competitiveness of its customers in various industries. Through innovative product design, high-volume manufacturing expertise and efficient service it enables business partners to improve their productivity and quality, and reduce costs of assembly, manufacturing, and other processes. The majority of the Company's turnover comes from its core activity, the production of furniture connectors, concealed hinges, and furniture damping. The precision engineering competence gained in the field of furniture hardware has been applied to other areas: multi-purpose damping technology, automated assembly systems, precision die casting and ultrasound fastening technology in various industries such as furniture, home appliances, automotive, medical devices and hardware.

For more information and photos, please visit [www.titusplus.com](http://www.titusplus.com)

**Martina Kuzmič** [martina.kuzmic@titusplus.com](mailto:martina.kuzmic@titusplus.com) T: +386 5 66 90 401