

# PressRelease



[info@titusplus.com](mailto:info@titusplus.com)

May 2024

**Titus furniture hardware presents innovative solutions designed to simplify the assembly process, resulting in significant time and effort savings.**

**Discover our latest innovations Engineered for Easy Assembly at Maderalia Valencia from 14-17 May 2024**

Visitors to the **Titus stand E48, in hall N3-P1**, will have the opportunity to experience the advantages of the Titus' flagship T-type hinge family, designed for quick assembly and consistent lifetime performance. Now with a tool-free hinge cup fixing system for fast and easy mounting along with the exceptional stability of the recent T-type-i 170-degree hinge with integrated damper effective for tall doors. Other novelties include the new Push Latch S2 for noiseless opening and confident bounceless door closing; the Quickfit TL5 'Full Metal Jacket' dowel range for strong and secure connection; and the Tekform Slimline Tacto, effortless touch opening system on drawers. In the area of custom damping solutions, the highlight is the new damper for cold environments, demonstrating Titus' commitment to providing custom damping solutions to various industries.

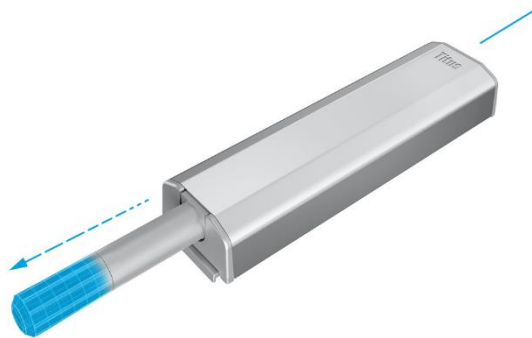
**T-type hinge family - Designed for a lifetime of consistent and reliable performance**



**The T-type hinge**, featuring a robust design with an integrated damping mechanism, delivers reliable soft closing and consistent performance for up to 200,000 cycles throughout its lifetime. This is particularly significant for thicker and heavier cabinet doors that are prone to sagging. The latest addition to the T-type product range is **T-type PressTo hinge** featuring toolless hinge cup fixing for an effortless and now even faster hinge installation. This innovative hinge cup securely attaches the hinge to the cabinet using manual pressure, eliminating the need for additional tools.

An effective option for tall doors is the **new T-type-i 170°** hinge version with an integrated Titus damper. It offers exceptional stability and full accessibility to the cabinet within the storage space. Its wide opening angle, coupled with a 'zero protrusion' design makes it an optimal solution for kitchen pantry units with inner drawers. The T-type is available in two trendy finishes – Noir and TeraBlack and is designed to offer **3Way snap-on** intuitive hinge-to-plate mounting and **ConfidentClose**, the consumer-preferred way of soft closing the door: fast closing, late start of deceleration action and quiet landing with SoftTouch.

### Push Latch S2 – Solution for effortless push opening of handleless cabinets



The second generation of Titus push opening system for handleless cabinet doors provides noiseless opening and consistent soft landing on a wide range of doors.

The **Push Latch S2** mechanism incorporates damping feature that controls the outward motion generated by a push action, resulting in a decisive but soft door opening free of any rebound. The door closing is confident, reliable, and consistent from the first time.

The door-to-side panel gap adjustment guarantees accuracy and reliability of

performance across all applications.

**Safety in use** is ensured with the firmly fixed adjustment button, which features a safety detachment function designed to prevent accidental removal.

### Quickfit 'Full Metal Jacket' - Connector technology engineered for easy assembly



**Quickfit 'Full Metal Jacket'** is a high-performance Quickfit connector family with greater resistance to dowel pull-out, providing optimal strength and effective performance in multiple wood-based materials, including MDF, chipboard and solid wood. **Quickfit TL5 dowel** is developed to make cabinet assembly fast and easy with tool-free insertion. Its unique expandable metal sleeve is the main feature that provides reliable engagement in a 5mm dowel hole, allowing for the incorporation of Quickfit

dowel insertion technology across a wide range of applications in RTA furniture where 5mm drilling is the standard. As a result, the use of this dowel ensures the maintenance of rigid furniture construction that doesn't loosen with age, showing high resistance to torsion and dowel pull-out.

## System 6 - Second generation of face-boring connectors for fast and flexible cabinet assembly



**New Titus System 6**, featuring a square shape, ensures easy and accurate knock-in insertion with comfortable tightening, resulting in high-performance joint and sturdy cabinet construction. This face-boring-only connector is typically used for wardrobes and closets that require the continuous building of segments in limited space.

Assembly has never been that easy with the use of a tool-free Quickfit dowel, as it provides ultimate onsite flexibility. Its push-in design significantly simplifies and speeds up the installation process,

keeping users free to change their cabinet design at any time. This feature is particularly useful if the shelf needs to be moved, or the dowels are inserted into the wrong hole. The square shape offers an enhanced look to the furniture with less prominent hardware, which doesn't need to be hidden. Thanks to its specific technical and design solutions, it enables higher competitiveness and an efficient manufacturing process.

## Tekform Slimline Tacto – Effortless push opening solution for handleless drawers



Titus combined its push latch technology knowhow with the push-to-open knowledge of Kinetics division and introduced **an efficient push-to-open solution** for drawers.

The result is Tekform Slimline thin wall drawer now upgraded with Tacto touch opening system for effortless opening of handleless drawer fronts. In short, this

means easy opening and reliable closing.

**Tekform Slimline Tacto** has the activator integrated into the drawer runner, while all other components remain the same as for the 'standard' Slimline version, as do drilling and fixing positions. This feature makes the **installation simple and precise**. **The simplicity to mount** is further supported by a **non-handed** Tacto mechanism that is intuitively placed into the correct position without the need of predrilling. Tacto mechanism follows the 'One-for-All' principle, meaning that one item provides push-open feature to a range of metal and glass drawers.

### Slidix Centro – Soft to open, soft to close



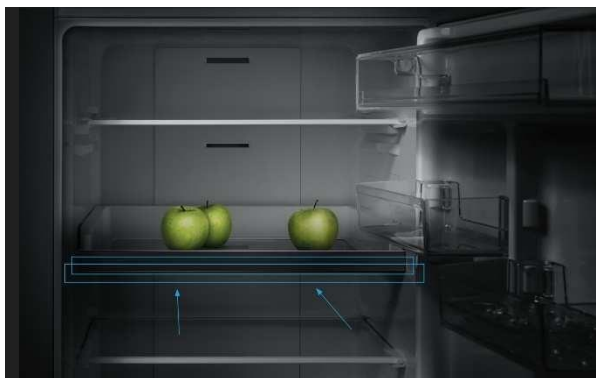
**Slidix** presents a comprehensive **range of damping solutions** tailored for various applications, including internal sliding door systems, wardrobes, and drawer systems, spanning from cabinet slides to refrigerators.

**The Slidix Centro mechanism** is designed for mid-door soft closing and centring functionality. Its standout feature is the integration of Titus hydraulic damper technology, which ensures reliable soft closing in both

directions, consistent performance across closing speeds, and smoother soft closing with reduced re-bounce.

Furthermore, this system reduces the effort required to open the door, guaranteeing a user-friendly and comfortable experience. Slidix Centro can be easily customised to align with specific customer requirements concerning weight, friction, and speed. Its compact design accommodates dampers of various forces, enabling optimal soft closing on doors weighing between 15 and 40kg. For furniture manufacturers, the compact size reduces its impact on design, obviating the need for substantial adaptations. Notably, Slidix Centro features a dedicated activator that seamlessly integrates with other Slidix mechanisms, creating a comprehensive suite of soft-closing solutions suitable for large wardrobes with three or more doors.

### Multi-purpose damping technology - Damper for cold environments



As part of our 'Engineered for Purpose' philosophy aimed to improve customers' competitiveness with Titus products, we have launched a **damper designed for cold environments**. This damper has been proven to perform reliably in temperatures as low as -30°C, maintaining consistent damping performance in all conditions. The Titus damper for cold environments ensures smooth and silent closing without

rebound, making it highly efficient for damping objects in cold environments' consumer appliances such as freezers, refrigerators, and wine coolers, as well as wider applications in the automotive industry.

## Titus Group

Titus Group, the UK-owned company, develops, manufactures, and markets innovative precision component solutions that improve competitiveness of its customers in various industries. Through innovative product design, high-volume manufacturing expertise and efficient service it enables business partners to improve their productivity and quality, and reduce costs of assembly, manufacturing, and other processes. The majority of the Company's turnover comes from its core activity, the production of furniture connectors, concealed hinges, and furniture damping. The precision engineering competence gained in the field of furniture hardware has been applied to other areas: multi-purpose damping technology, automated assembly systems, precision die casting and ultrasound fastening technology in various industries such as furniture, home appliances, automotive, medical devices and hardware.

For more information and photos, please visit [www.titusplus.com](http://www.titusplus.com)

**Martina Kuzmič** [martina.kuzmic@titusplus.com](mailto:martina.kuzmic@titusplus.com) T: +386 5 66 90 401