

# PressRelease



[info@titusplus.com](mailto:info@titusplus.com)

October 2022

## Engineered for a purpose: improve productivity and quality while reducing manufacturing and assembly costs. Find latest Titus furniture hardware innovations at SICAM Pordenone, 18-21 October 2022

Visitors to Titus stand B44/C45 will have the opportunity to experience the advantages of Titus flagship T-type hinge family, designed for quick assembly and a lifetime of consistent performance. Other novelties include new Push Latch S2 for noiseless opening with no bounce and a confident door closing; second generation of System 6 connectors for easy and accurate knock-in insertion with comfortable tightening, providing high performance joint and sturdy cabinet construction. In the area of custom damping solutions, the highlight is our new damper for cold environments.

### T-type hinge family - Designed for a lifetime of consistent performance

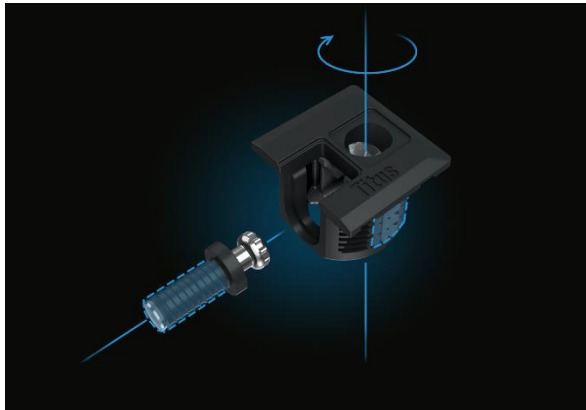


The innovative, award-winning **T-type hinge** with integrated damping is an uncompromisingly reliable hinge with a **long-lasting, consistent performance of 200,000 cycles**, which is especially important for thicker and heavier cabinet doors where sagging is an issue. Its key features are simplicity of assembly, wide tolerances, and reliable soft closing on a wide range of doors. The **3Way snap-on** intuitive hinge-to-plate mounting (top, front, and back)

makes installation a breeze, especially on tall doors, as it significantly reduces the time and effort it takes to assemble a kitchen.

T-type is designed to provide **ConfidentClose**, consumer preferred way of soft closing of the door: fast closing, late start of deceleration action and quiet landing with SoftTouch.

## System 6 - Second generation of performance-engineered connectors for simplified wardrobe and storage system assembly



New Titus System 6 with a square shape assures easy and accurate knock-in insertion with comfortable tightening, providing high performance joint and sturdy cabinet construction. This face-boring only connector is typically used for wardrobes and closets requiring continuous building of segments in a limited space.

With the use of a tool-free Quickfit dowel the assembly has never been that easy as it provides ultimate onsite

flexibility. Its push-in design significantly simplifies and speeds up the installation process, while keeping users' freedom to change their cabinet design at any time. This is very useful if a shelf needs to be moved, or the dowels are inserted in the wrong hole. The square shape offers an enhanced look of the furniture with less prominent hardware that you wouldn't want to hide. Thanks to its specific technical and design solutions it enables higher competitiveness and efficient manufacturing process.

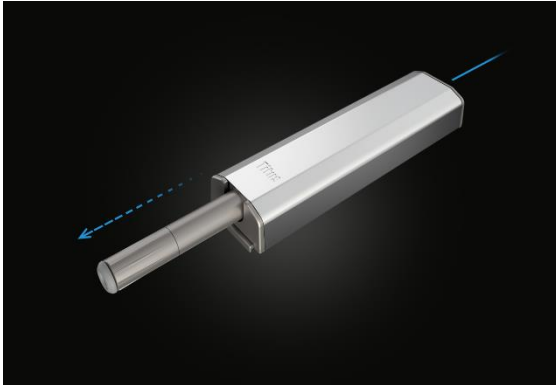
## Tekform Slimline Tacto – Effortless touch opening system for drawers



Titus introduced **an efficient push-to-open solution** for drawers. Its Tekform Slimline Tacto is a thin wall drawer now upgraded with Tacto touch opening system for effortless opening of handleless drawer fronts. It guarantees easy opening and reliable closing.

**Tekform Slimline Tacto** has the activator integrated into the drawer runner, while all other components remain the same as for the 'standard' Slimline version, as do drilling and fixing positions. This feature makes the **installation simple and precise**. **The simplicity to mount** is additionally supported by a **non-handed** Tacto mechanism that is intuitively placed into the correct position without the need of predrilling. Tacto mechanism follows the 'One-for-All' principle, meaning that one item provides push-open feature to a range of metal and glass drawers.

## Push Latch S2 – Solution for effortless touch opening of handleless cabinets



Second generation of Titus push opening system for handleless cabinet doors provides a noiseless opening action with no bounce and a consistent, confident door closing on a wide range of doors. It works with standard hinges, with or without soft closing.

**New Titus Push Latch S2** incorporates a damping feature which controls the outward motion triggered by push, making the door opening decisive but

soft, silent and bounceless. The door closing is confident, reliable, and always right the first time. Door-to-side panel gap adjustment assures precision and reliability of action in all applications. Safety in use is assured with safety detachment feature and a firmly fixed adjustment button which cannot be accidentally removed.

## New damping solution - Damper for cold environments



Following Engineered for a Purpose philosophy for improving our customers' competitiveness with Titus products, we have launched a **damper for cold environments**, which successfully performs in **temperature range as low as -30°C, maintaining a consistent damping in all conditions.**

**Titus damper function** for cold

environments guarantees reliable smooth and silent closing without re-bounce and efficient damping of objects in applications for cold environment products like freezers, refrigerators, wine coolers, as well as wider application range in automotive industry.

By adding a motion control device, the manufacturer benefits from increased value of the product by improved end-user experience with higher comfort in use, silent performance, safer closing and extended lifetime of all components and materials.

### Titus Group

The UK owned Titus Group develops, manufactures, and markets innovative precision component solutions that improve competitiveness of its customers in various industries. Through innovative product design, high-volume manufacturing expertise and efficient service it enables business partners to improve their productivity and quality as well as reduce costs of assembly, manufacturing, and other processes. The majority of the Company's turnover comes from its core activity, the production of

furniture connectors, concealed hinges, and furniture damping. The precision engineering competence gained in the field of furniture hardware has been applied to other areas: multi-purpose damping technology, automated assembly systems, precision die casting service and ultrasound fastening technology in various industries such as furniture, home appliances, automotive, medical devices and hardware.

For more information and photos, please visit [www.titusplus.com](http://www.titusplus.com)

**Martina Kuzmič** (martina.kuzmic@titusplus.com)

**T:** +386 5 66 90 401