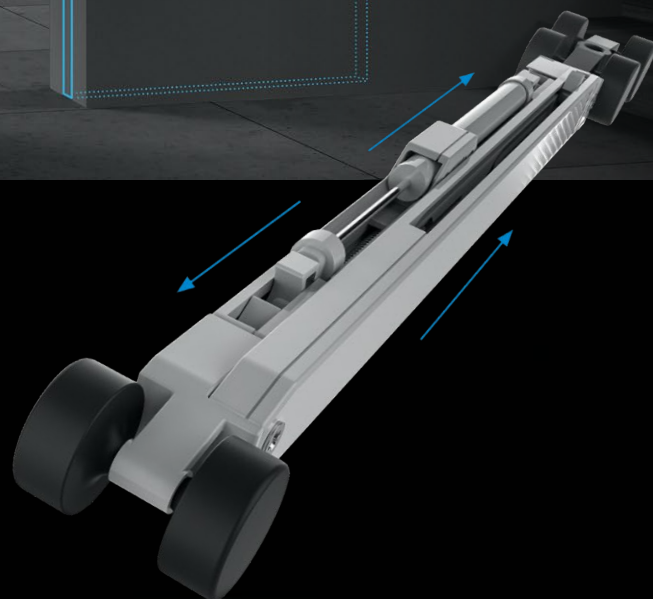


Titus+



PushTrio

Three-in-one: Push opening, soft opening
and soft closing for pocket doors



Fully retractable pocket sliding doors



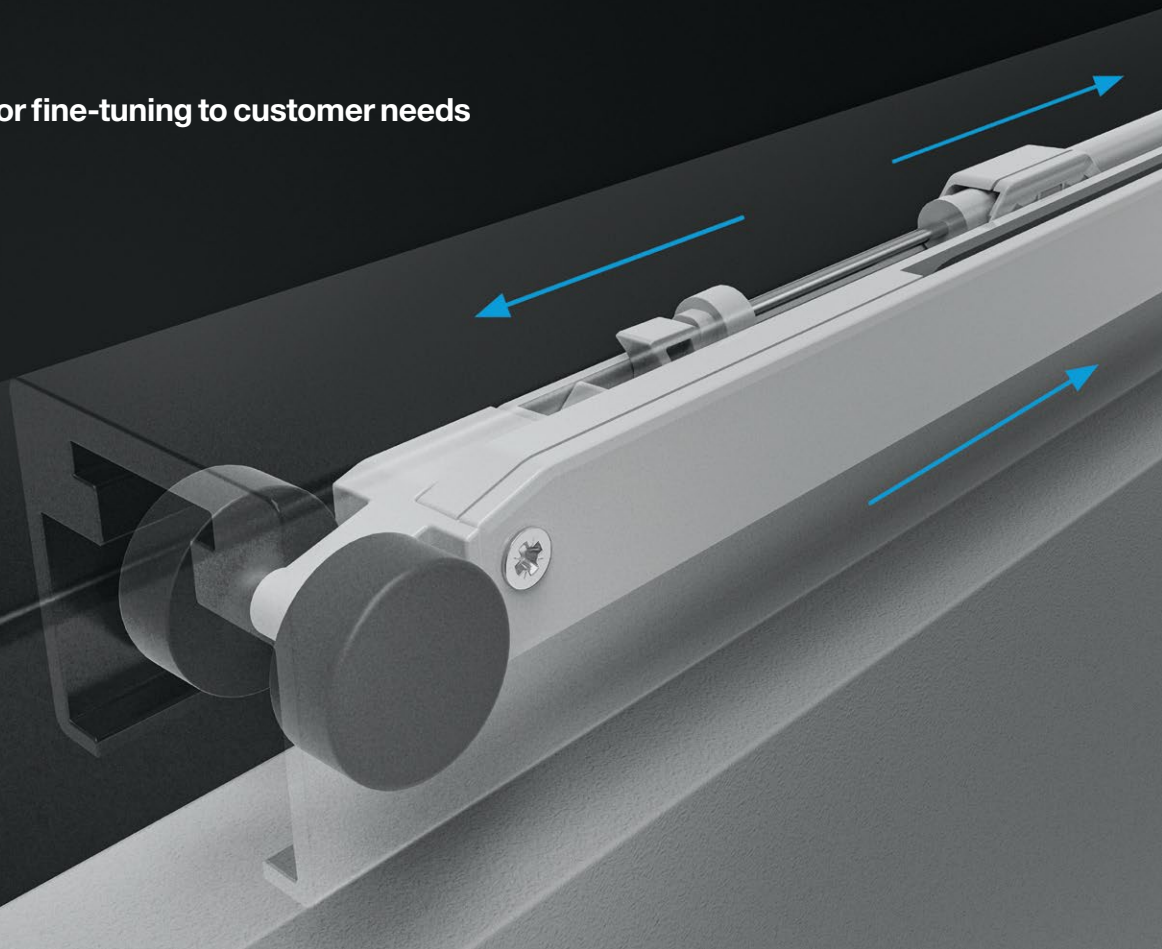
A light push to activate

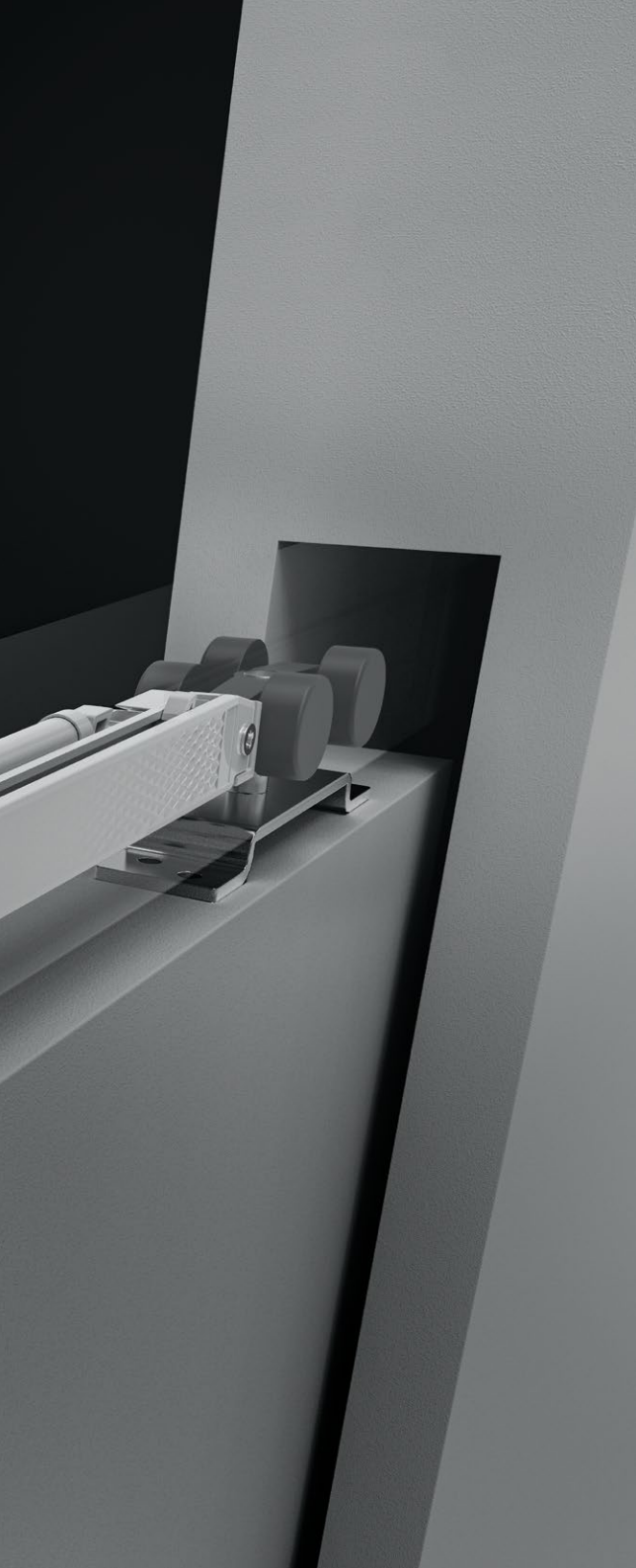


Smooth and reliable damping



Ready for fine-tuning to customer needs





Engineered for comfortable usage of pocket doors

PushDuo and PushTrio solutions

Discover our range of pocket door systems for seamless and noiseless door operation. **PushDuo** is a standard pocket door system that features push opening and soft closing capabilities. **PushTrio** is an upgraded version that provides a three-in-one solution: push opening, soft opening, and soft closing. By seamlessly integrating these three functions into one system, PushTrio becomes the one solution for all pocket door scenarios.

Elevating user comfort

The soft opening and self-closing mechanisms add to a smooth performance, while the push-to-open feature enhances convenience, making everyday usage effortless.

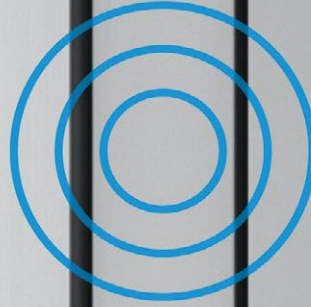
Modular design for maximum flexibility

A key feature of both system lies in their modular design, which offers maximum flexibility and adaptability to various railing systems for pocket and sliding doors. This level of customisation ensures a solution that meets individual customer needs and specific application requirements.



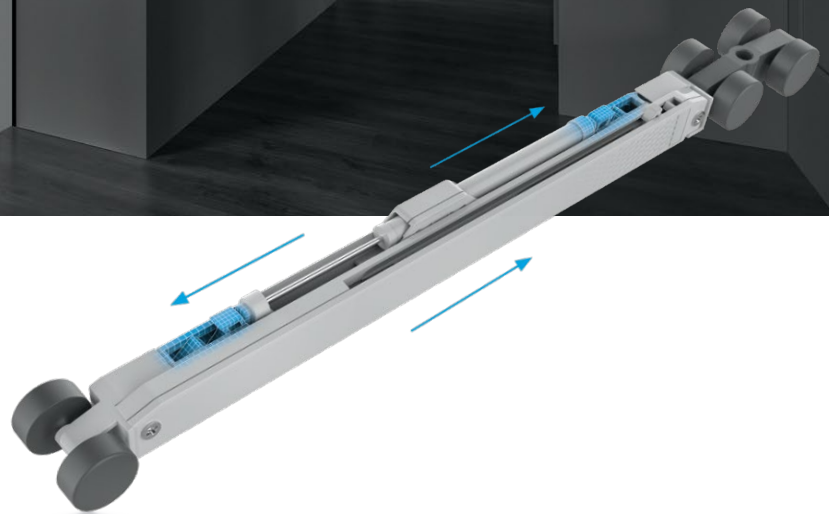
Fully retractable pocket sliding doors

- Maximises available space by allowing pocket doors to fully retreat into the side wall, ensuring a flush finish
- Zero protrusion optimises the available moving area in the passage



A light push to activate

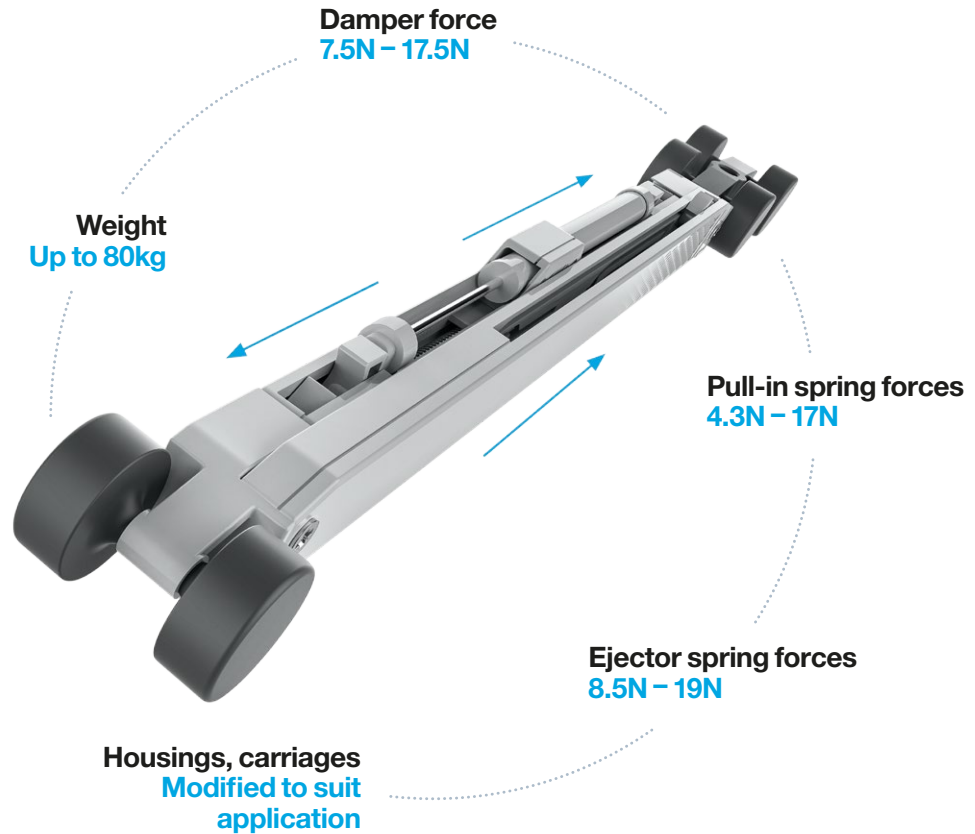
- Push-to-open mechanism with a minimal trigger range of just 0.5mm
- Doors eject for min. 80mm, making it comfortably accessible to close by hand



Smooth and reliable damping

- Titus damper inside provides quiet and smooth door operation
- Comfortable and consistent damping in the opening and closing directions
- Delivers an even opening/closing action across diverse door dimensions and weights, maintaining consistent damping at any closing speed

»»» Titus
damper
inside««



Ready for fine-tuning to customer needs

- Modular design allows for efficient fine-tuning to specific applications
- Adaptable through minor modifications and utilisation of standard components
- Ensures optimal performance of any pocket doors



Titus Group / titusplus.com

