

LamaCaster Multi-Slide Die Casting Machines

Experts in Multi-Slide Die Casting

LamaCaster Multi-Slide Die Casting Machines

LamaCaster P65

A fast-cycling pneumatic machine ideal for the production of small parts. Combining very fast cycle speeds and multi-cavity tooling for top performance and production.

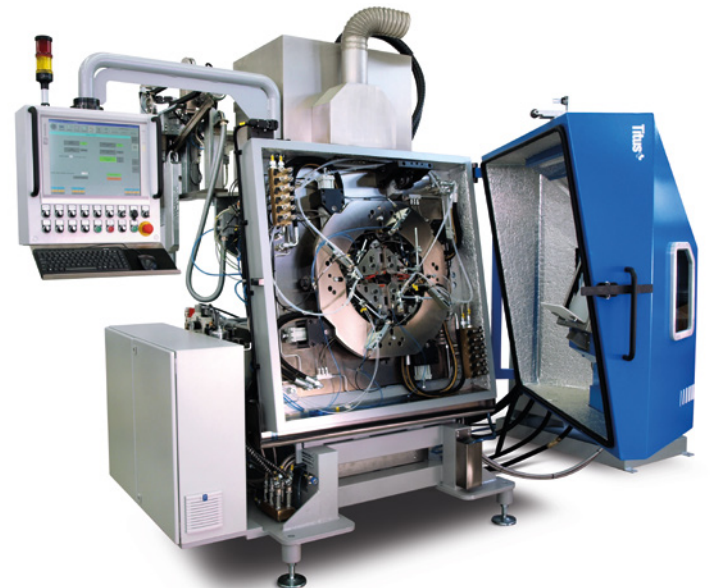
Tooling:	65 mm x 65 mm
Clamping force:	3.2 tonnes
Shot weight:	60 g
Dry Cycle Speed:	100 cycles per minute
Casting speed:	55 cycles per minute



LamaCaster H65

A powerful and precise multi-slide hydraulic machine used for applications where casting integrity, thin wall sections and surface finish are the priority.

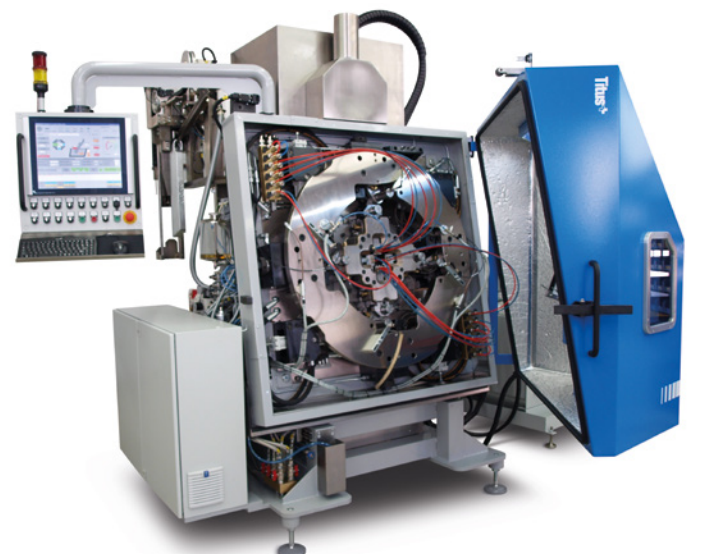
Tooling:	65 mm x 65 mm (100 mm x 65 mm as an option)
Clamping force:	8 tonnes
Max shot weight:	90 g
Dry cycle speed:	60 cycles per minute
Casting speed:	45 cycles per minute



LamaCaster H100

Our largest and most powerful machine. Ideal for castings where integrity, thin wall sections and surface finish are the priority.

Tooling:	100 mm x 100 mm
Clamping force:	20 tonnes
Shot weight:	220 g
Dry Cycle Speed:	45 cycles per minute
Casting speed:	30 cycles per minute



Lama CombiCaster Insert Casting

By using all of our in-house competences, machine building, tooling and automation we can create unique solutions for in-tool component assembly. Typically casting zinc onto steel inserts to produce components that combine the best attributes of both materials.



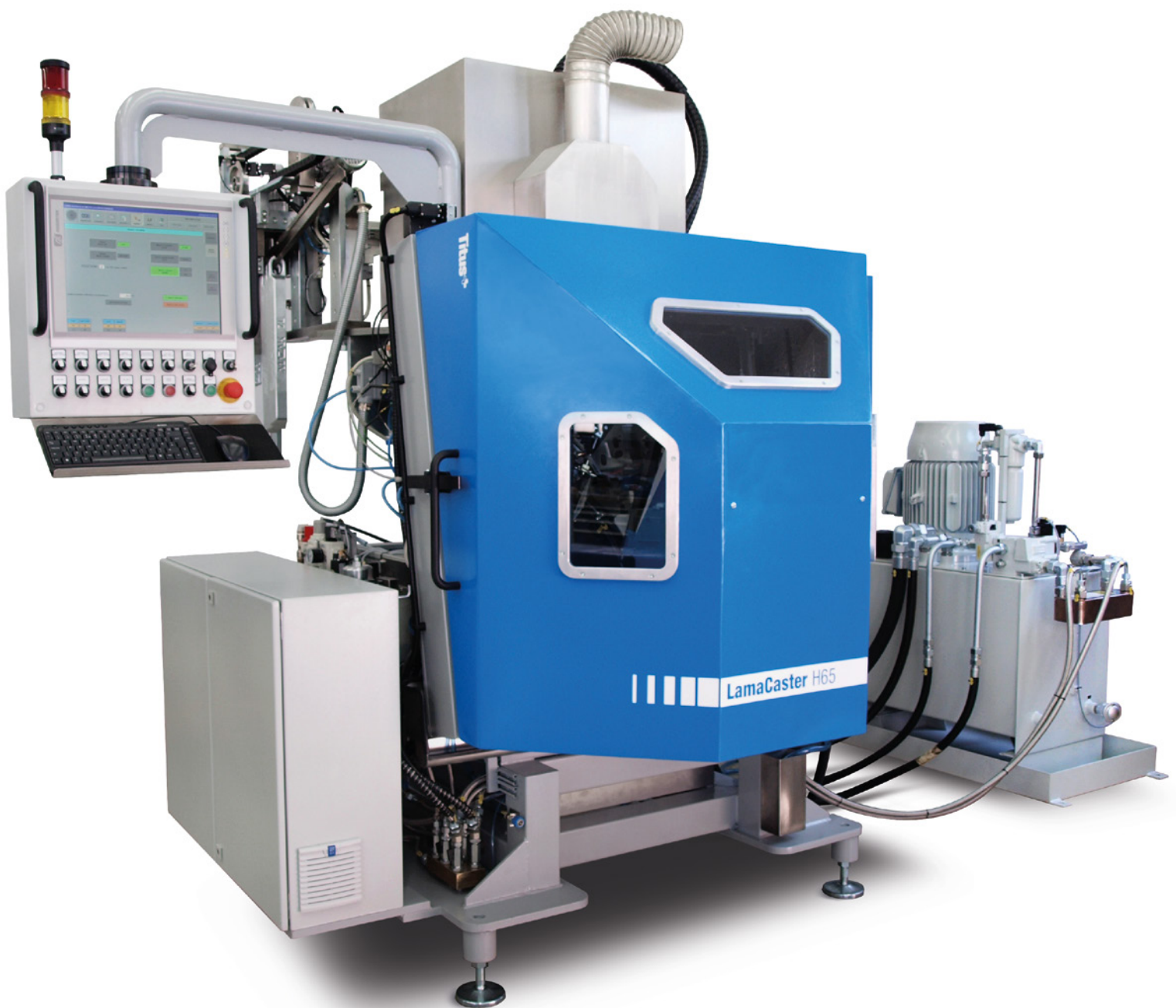
LamaCaster Customised Casting Cells

Our unique skillset of machine building, tooling and in-house automation allows us to produce fully integrated casting cells that can complete a full range of operations on components. We can cast, de-gate, finish and carry out a range of secondary operations in the same cell. Reduce inventory, transport cost and delivery times by using the latest casting cell technology.



LamaCaster H65 Mk3

The **LamaCaster H65** is a powerful multi-slide die casting machine that delivers speed, power, and precision. It is ideal for the production of complex castings where high integrity, thin wall sections and surface finish are the priority.

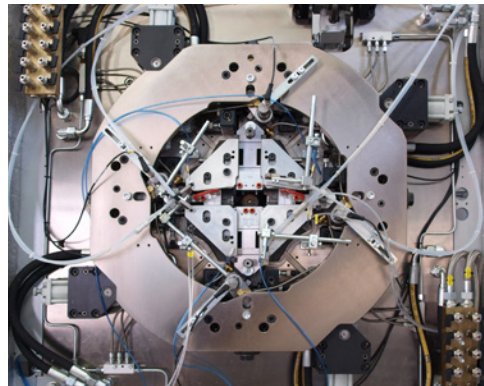


Specification



- **Locking force:**
8 tonnes
- **Tool size:**
65 mm x 65 mm
100 mm x 65 mm (as an option)
- **Shot weight:**
up to 150 g
- **Dry cycle speed:**
65 cycles per minute

Speed



- Fast cycling
- Dry cycle speed >60 cycles per minute
- Casting speeds at >40 cycles per minute
- Quick tool changeovers (20 min)

Power



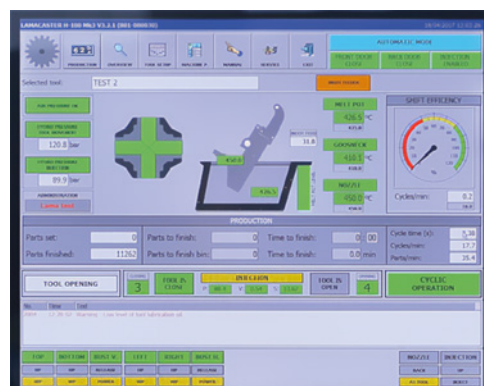
- 11 kW hydraulic system
- Clamping force of 8 tonnes
- Multi stroke ejection function on each toggle position
- Max theoretical shot weight 150 g
- Max recommended shot weight 90 g
- 130 bar injection

Precision



- High integrity castings
- Complex shapes
- Plating quality surface finish
- ± 0.01 mm general tolerance
- ± 0.03 mm roundness across the parting line
- Wall thicknesses to 0.5 mm
- Up to six slides for complex shapes

Control



- Touch screen operator interface
- Proprietary software
- 100 tool programme storage capacity
- Shot monitoring capability
- Start up and bad part rejection system
- Six independently programmable hydraulic functions

LamaCaster H100 Mk3

A fast, powerful and accurate multi-slide hydraulic machine used for larger castings where tight tolerances, thin wall sections and excellent surface finish are the priority. The **LamaCaster H100 Mk3** delivers all the benefits of multi-slide technology: **speed, power, precision** and **significant savings in raw material, energy and labour**. In addition, the new H100 has been upgraded in several areas resulting in major benefits for the user.



Specification



- **Locking force:** 20 tonnes
- **Tool size:** 100 mm x 100 mm
- **Shot weight:** up to 370 g
- **Dry cycle speed:** 60 cycles per minute

Hydraulics

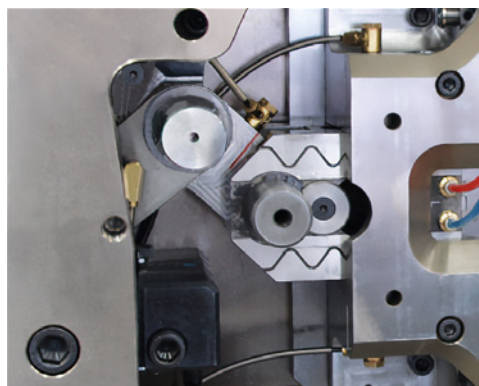
New configuration of machine hydraulics



- Greater speed
- Improved injection performance (90% casting yield)
- Shot to shot repeatability
- More responsive
- Quieter

Clamping

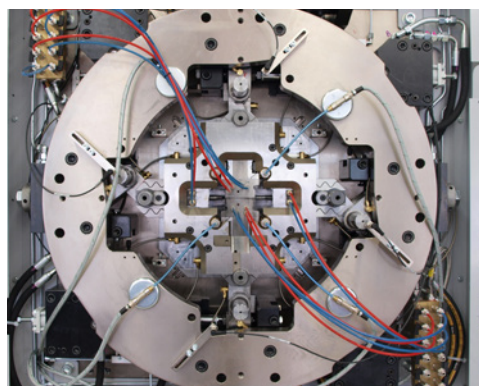
Hydraulic thruster added to clamping system



- 20 tonnes clamping force
- Fast acting toggle system
- Accurate low pressure close
- Minimal flash on parts
- Dimensional accuracy

Back plate layout

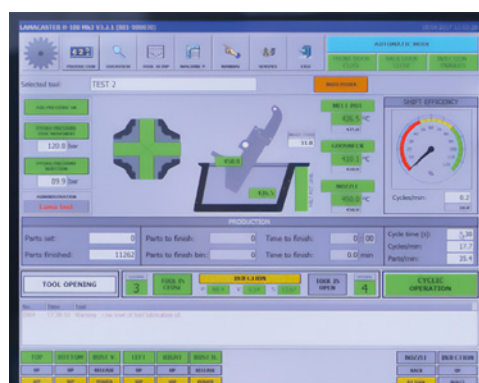
Larger back plate



- Easy access
- Faster tool changes (20 min)
- Quicker maintenance
- Operator friendly
- Easy to operate

Programme

Completely new programme



- Max process control
- Max operator feedback
- Optimal productivity
- Optimal casting quality
- Complex net shape parts with thin walls (down to 0.5 mm), tight tolerances (± 0.003 mm) and good surface finish



Titus Group | technologies@titusplus.com | titusplus.com

LamaCaster Machines 01.1 Eng May22