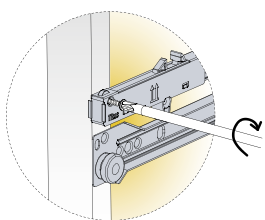
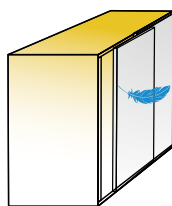


Titusoft Soft Closing Systems



Simple and intuitive mounting

- No pre-drilling required
- Non-handed
- User friendly



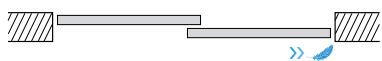
Smooth and reliable

- Silent in use
- Effortless opening with low pull-out force



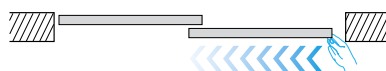
Titus damper inside

- Efficient damping on various door sizes and weights
- ConfidentClose assured



Fully controllable damping path

- Smooth and even soft closing on various dimensions and weights
- Reliable damping at any closing speed
- Silent closing without a rebound



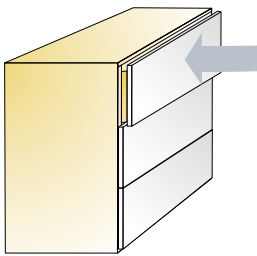
Comfortable door opening

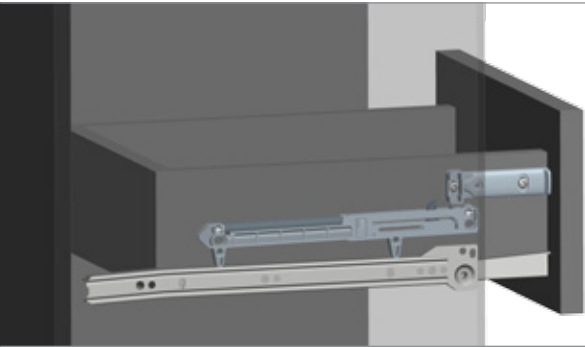
- Low pull-open force
- Effortless opening

Titusoft WD

Soft Closing System
for Wooden Drawer

For wooden drawer
with roller runners






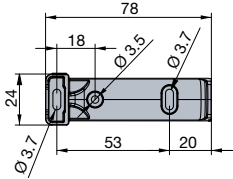
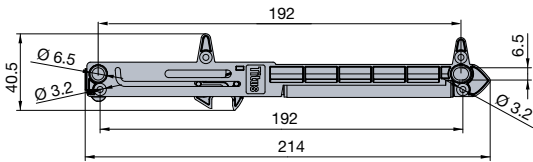

Technical details


Item number	Grey	White	Zinc plated blue
973-0X35 →	380		
973-4451 →	380	350	

Titusoft WD


Titusoft mechanism

Activator




Bag of 1
973-0X35-380-K2  120 Bags

- 1 Titusoft mechanism
- 1 activator
- 2 screws Ø3.5mm x 20mm
- 2 screws Ø3.5mm x 12mm
- 1 mounting instruction sheet

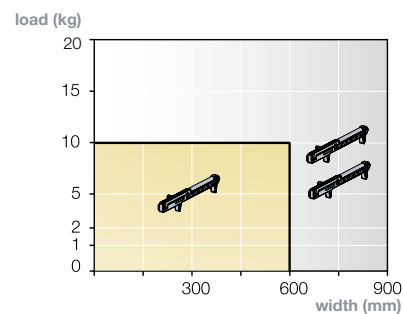
Bag of 2
973-0X35-380-K1  80 Bags

- 2 Titusoft mechanisms
- 2 activators
- 4 screws Ø3.5mm x 20mm
- 4 screws Ø3.5mm x 12mm
- 1 mounting instruction sheet

 250 Pcs
200 Pcs (973-0X35 + activator) Made of plastic

- Works with most roller runner drawer slides
- Easy, intuitive mounting
- Smooth, soft closing action independent of drawer hardware
- Optimal closing speed
- Non-handed design

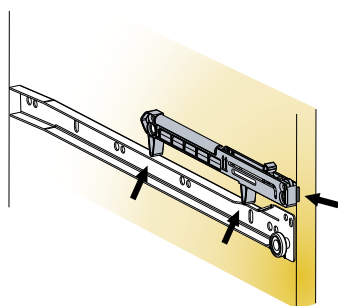
Capacity chart



Mount 1 or 2 Titusoft mechanisms depending on drawer weight and width

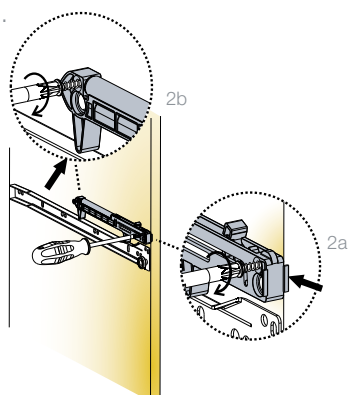
Mounting details

1.



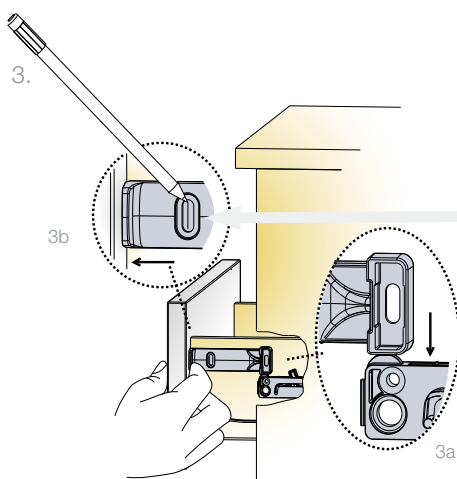
Position the Titusoft mechanism on the top of the drawer slide

2.



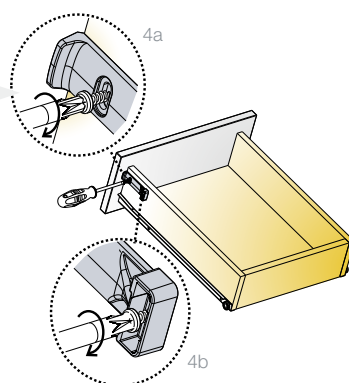
Fix with 2 screws L=20mm

3.



1. Rest the activator against the drawer front
2. Align the vertical position of the activator with the top of the Titusoft mechanism and mark the screw locations

4.



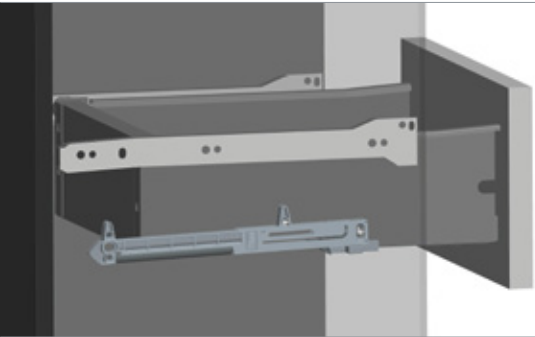
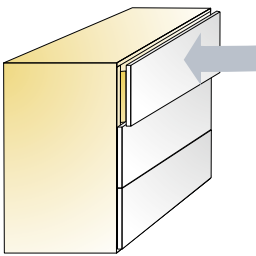
Fix with 2 screws L=12mm

A trial mounting is always recommended. Please contact Titus Group or your local distributor for further technical assistance.

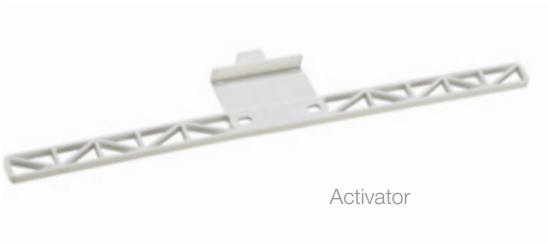
Titusoft MD

Soft Closing System for Metal Box

For metal boxes



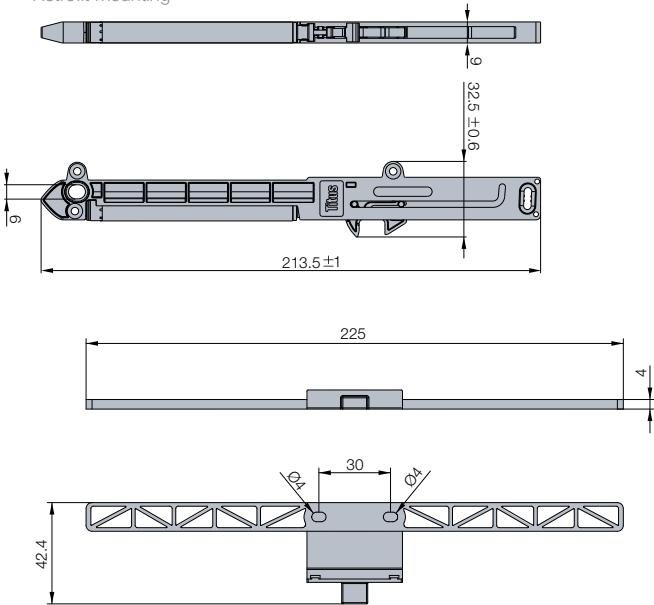
Titusoft MD



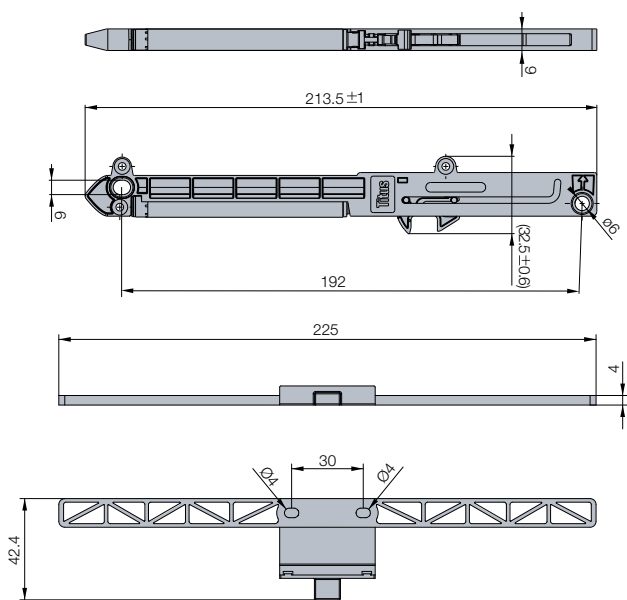
 250 Pcs
150 Pcs (973-0X39 + activator) Made of plastic

Technical details

Retrofit mounting



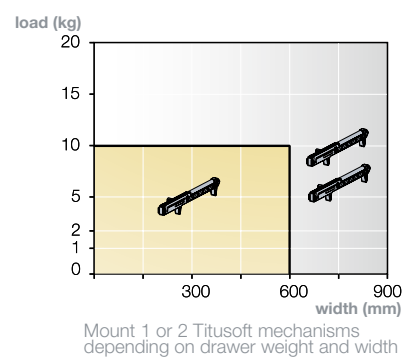
Factory mounting (system holes)



Item number	Grey	White	Light blue
Titusoft mechanism for factory mounting	973-0X95 → 380		
Titusoft mechanism for retrofit mounting	973-0X39 → 380		309
Activator	973-4125 →	350	
Mounting jig	973-4126 →		
Bag of 1 973-0X39-380-K2  90 Bags <ul style="list-style-type: none"> · 1 Titusoft mechanism · 1 activator · 1 mounting jig · 4 screws · 1 mounting instruction sheet 			
Bag of 2 973-0X39-380-K1  60 Bags <ul style="list-style-type: none"> · 2 Titusoft mechanisms · 2 activators · 1 mounting jig · 8 screws · 1 mounting instruction sheet 			

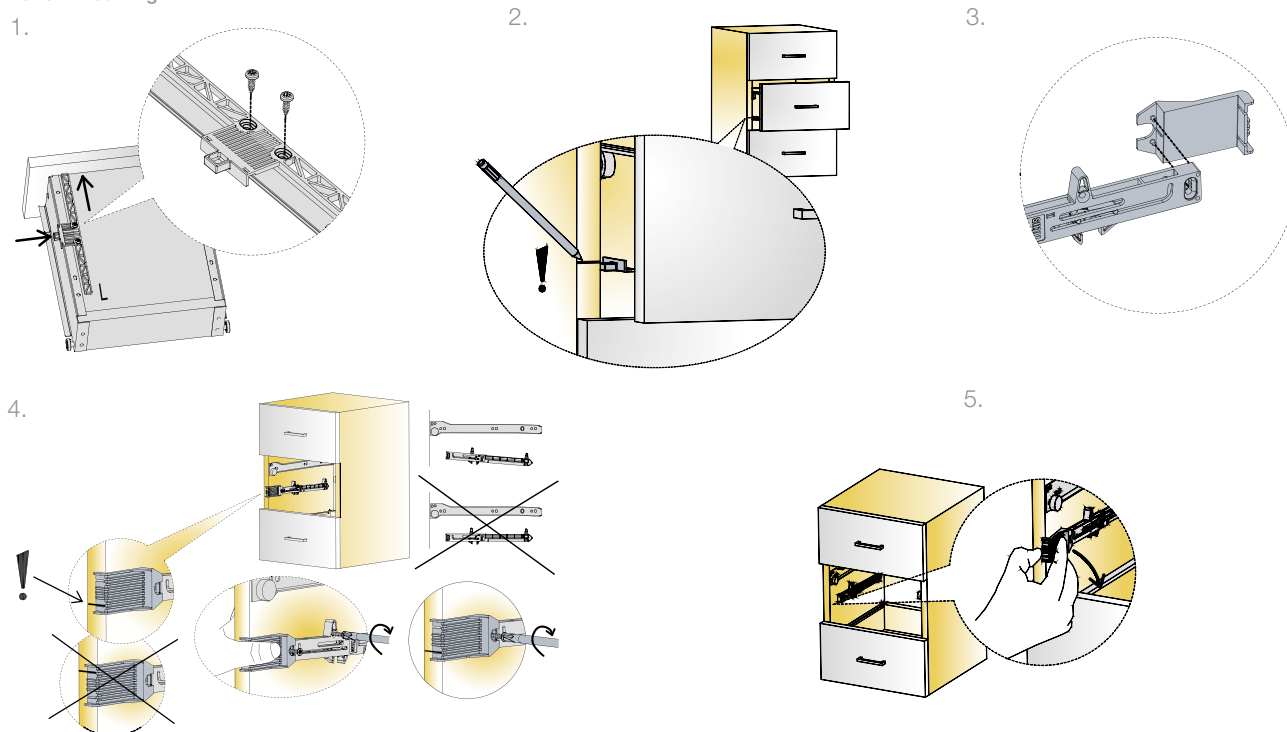
- One-for-all soft closing for single skin metal boxes
- Allows for easy factory mounting or retrofit application
- Intuitive positioning
- Preserve the life-time of the drawer

Capacity chart

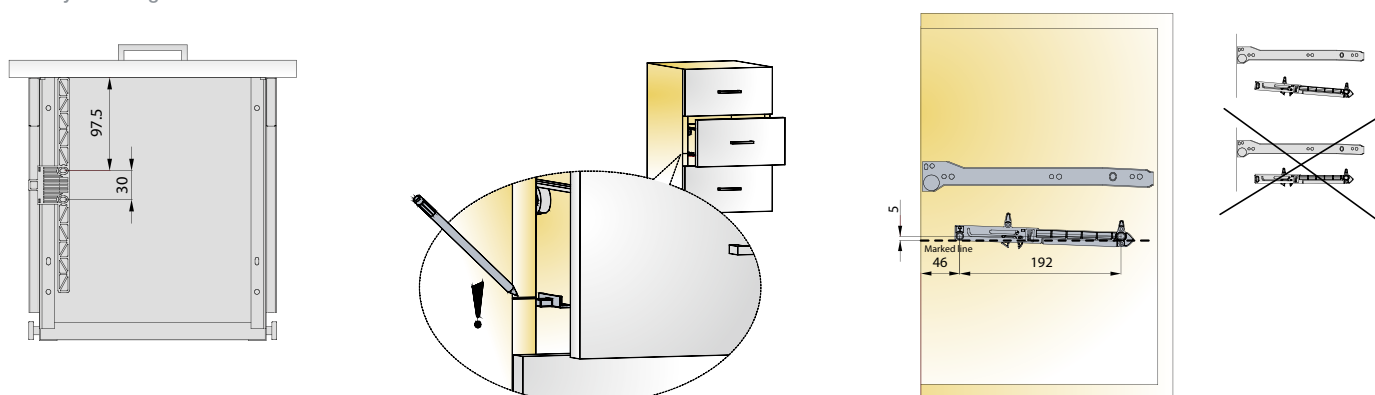


Mounting details

Retrofit mounting



Factory mounting

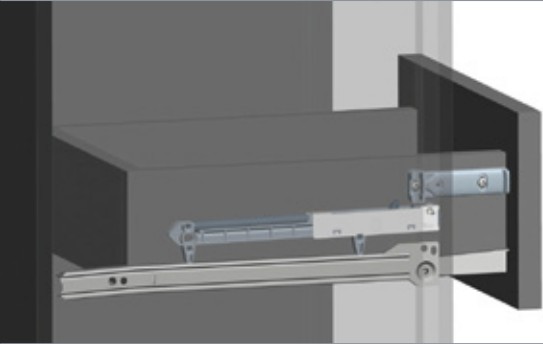
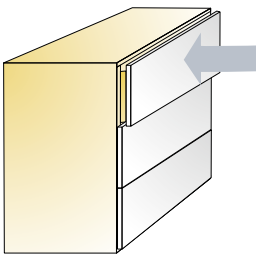


A trial mounting is always recommended. Please contact Titus Group or your local distributor for further technical assistance.

Titusoft FF

Soft Closing System for Face Frame Cabinets with Wooden Drawer

For wooden drawer
with roller runners



Titusoft FF

Technical details

Item number

Grey

White

973-0M99 →

380

Activator

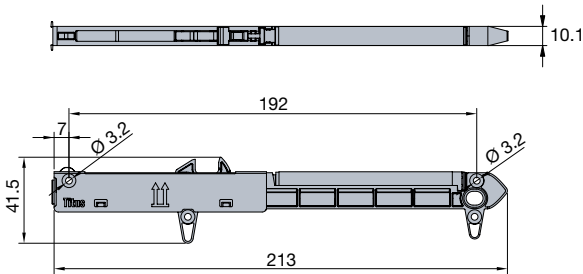
973-4451 →

380

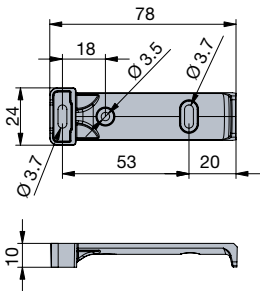
350



Titusoft mechanism



Activator



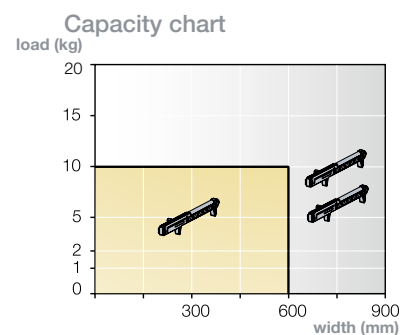
- Bag of 1**
973-0M99-380-K1  300 Bags
- 1 Titusoft mechanism
 - 1 activator grey
 - 2 screws Ø3.5mm x 25mm
 - 2 screws Ø3.5mm x 12mm
 - 1 mounting instruction sheet



250 Pcs

Made of plastic

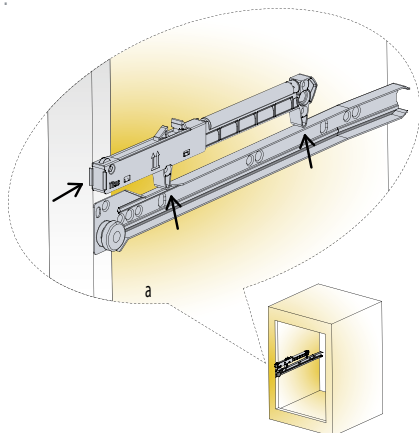
- Easy, intuitive mounting
- Universal application will fit most standard drawers
- Smooth, soft closing action independent of drawer hardware
- Non-handed design



Mount 1 or 2 Titusoft mechanisms depending on drawer weight and width

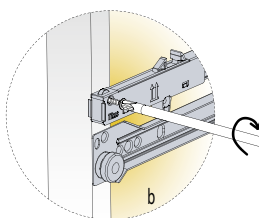
Mounting details

1.



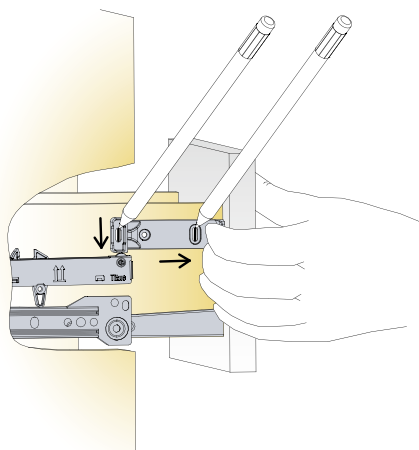
Position the Titusoft on the top of a drawer slide

2.



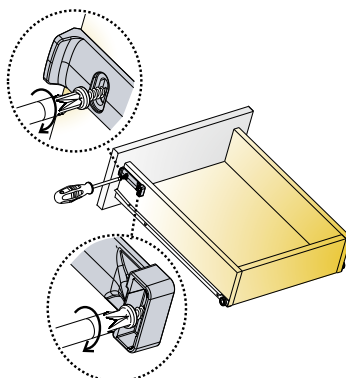
Screw the Titusoft mechanism to the face frame

3.



Align the activator with the top of the Titusoft mechanism and fix with two screws

4.



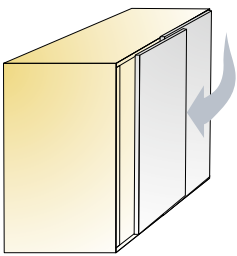
Fix with 2 (3) screws L=12mm

A trial mounting is always recommended. Please contact Titus Group or your local distributor for further technical assistance.

Titusoft SD100s

Add-on Damper for Set 200

For bottom running sliding door systems

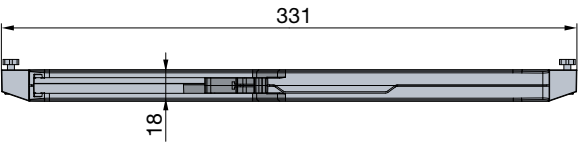
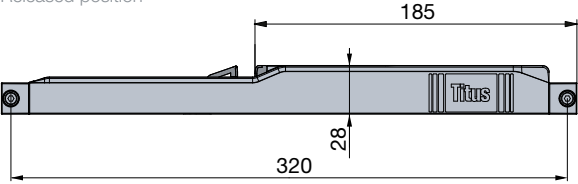


Titusoft SD100s



Technical details

Released position



Drawings show example with components presented above



Item number

Grey

973-9060 →

380

The system consists of the following components

Quantity for 2-door cabinet

Standard component

Titusoft SD100s mechanism



2 pcs

Customized components to suit the customer's sliding door system

Attachment base



4 pcs

Nut



4 pcs

Screw M4 x 16



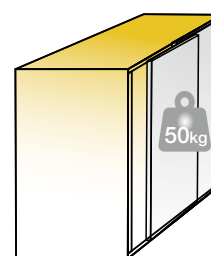
4 pcs



Activator and attachments on this page suit Set200.
We offer a customer dedicated design as per its requirements
→ contact Titus Group representative for more information

- Non-handed design
- Effortless door opening with low pull-out force
- Efficient damping on different door sizes
- Slim design for concealed application

Titusoft SD100s capacity



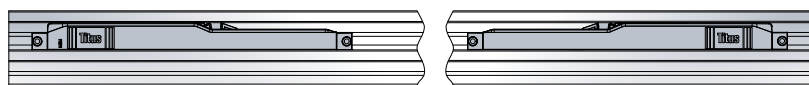
Up to 50kg per door



Set 200
> see page 4.37

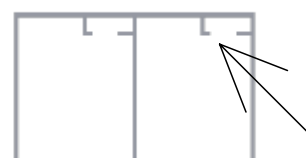
Mounting details

Non-handed design

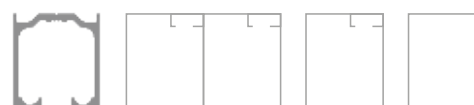


Mount Titusoft SD100s on top rail on both sides of the cabinet.
 (1 pc Titusoft SD100s per 1 door)

Mounting position



Titusoft SD100s is mounted into the top profile



Fit various U and double U shaped profiles

Space requirements

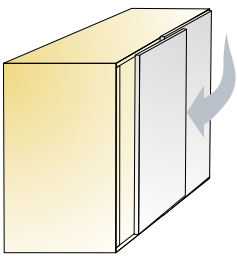


Slim design with 30mm height allows for concealed application

Titusoft SD100

Add-on Damper for Sliding Door

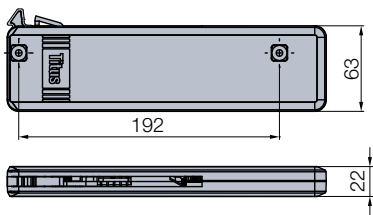
For top running sliding door systems



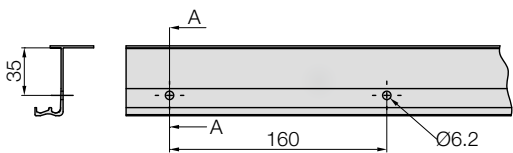
Titusoft SD100



Technical details



Drilling details

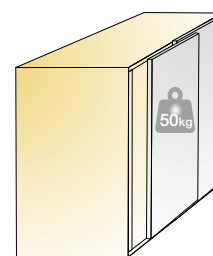


 32 Sets

		Item number	Grey
		973-9018 →	380
The system consists of the following components		Quantity for 2 door cabinet	
Standard component			
Titusoft SD100 mechanism			2 pcs
Customized components to suit the customer's sliding door system			
Base			4 pcs
Stopper			2 pcs
Activator for internal door			1 pc
Activator for external door			1 pc
Accessories			
Screws			
Countersunk screw D4x40mm			4 pcs
Countersunk screw D4x25mm			4 pcs
Chipboard screw Ø4x16mm			3 pcs
Eurocrew Ø6.3x15mm			2 pcs
Mounting instructions			1 pc

- ConfidentClose
- Intuitive mounting
- Non-handed design
- Efficient damping on different door sizes
- Smooth and controlled closing motion

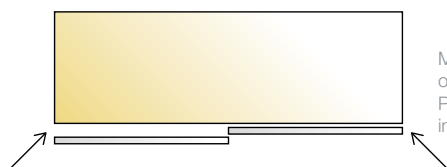
Titusoft SD100 capacity



Up to 50kg per door

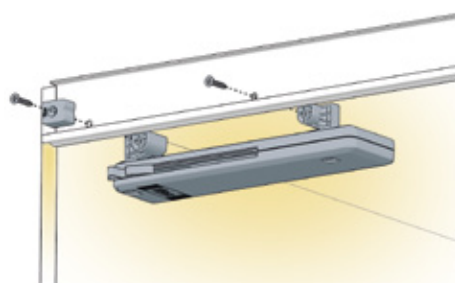
Mounting details

Non-handed design

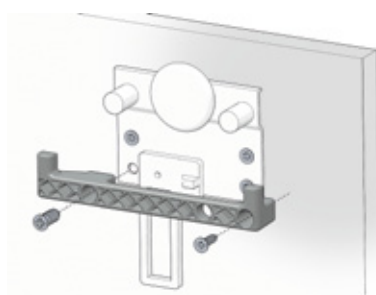


Mount Titusoft SD100 on top rail on both sides of the cabinet. Please follow mounting instructions included in a set.

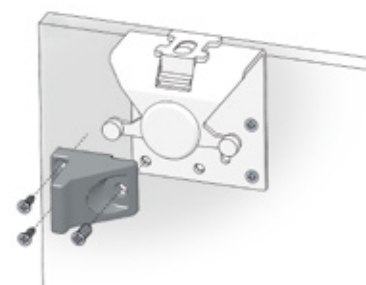
Mounting positions



Titusoft SD100 mechanism position



* Activator for internal door position



* Activator for external door position



Click to engage

distrib

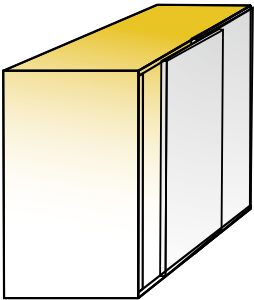
For further information please contact your Titus Group representative.

Sliding Door Solutions for Bottom Running Door Information

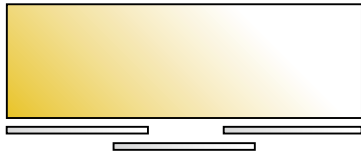
Introduction

Application

For built-in cabinets
Walk-in closets
Room-dividers
Wardrobes

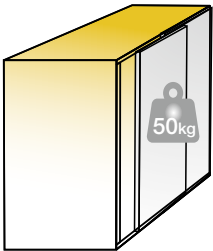


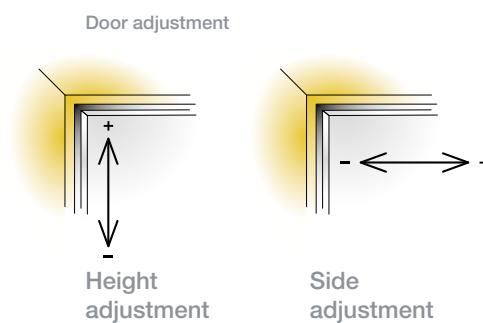
For 2 and 3 door
applications



Load capacity

Maximum door weight is 50 kg



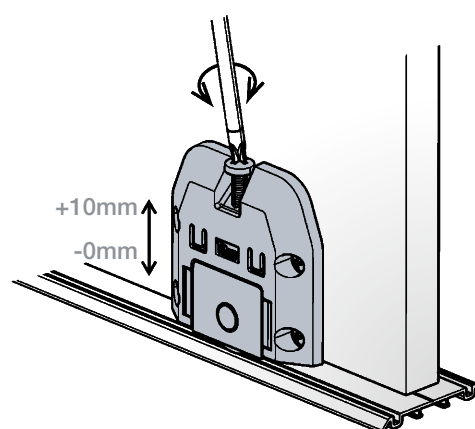
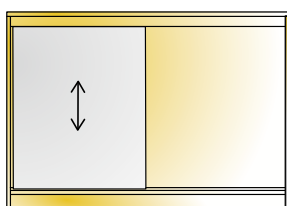


Adjustments

Height adjustment

Height adjustment is done through the adjustment screw on the bottom carriage

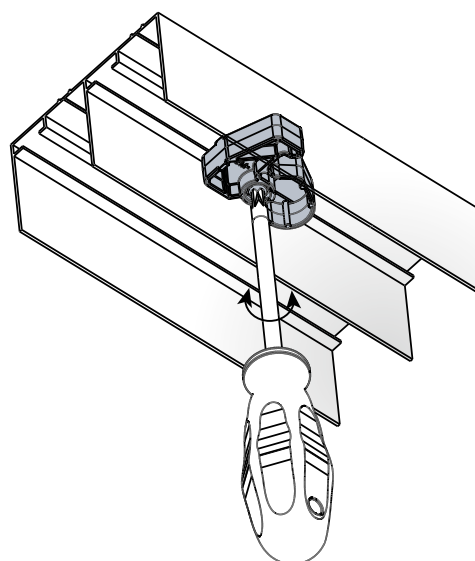
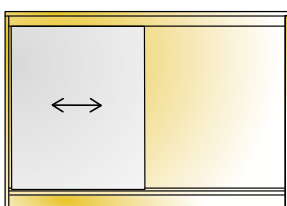
Adjustment range depends on the preset position.
Carriage is factory preset to the lowest value.



Side adjustment

Side adjustment is done through stopper position.

The adjustment defines the gap between doors and cabinet side/wall

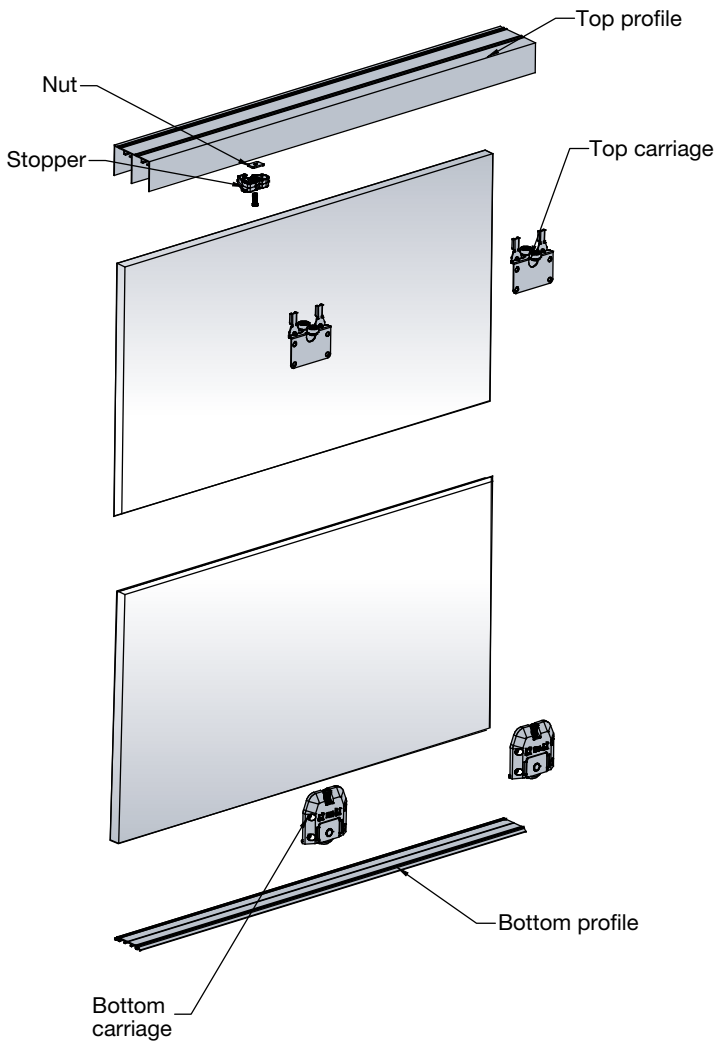
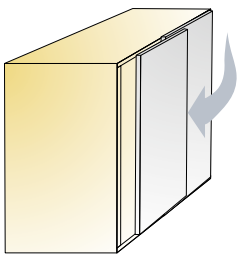


Stopper limits and stops the motion of the cabinet door

Set 200

Sliding Door Mechanism

For bottom running sliding door systems



Item number for set	Set for 2-doors	Set for 3-doors
610-9691-380 →	K1	K2
Set consists of the following components		
Bottom carriages	4 pcs	6 pcs
Top carriages	4 pcs	6 pcs
Pan head screws	32 pcs	48 pcs
Stopper	4 pcs	6 pcs
Nut for stopper	4 pcs	6 pcs
Screw M4 x 16 for stopper	4 pcs	6 pcs
Self adhesive tape	5 pcs	5 pcs
Mounting instructions	1 pc	1 pc

 20 sets



Rails and accessories are not included in the set and can be ordered separately

Rails



Top rail
→ see page 4.39



Bottom rail
→ see page 4.39

Accessories

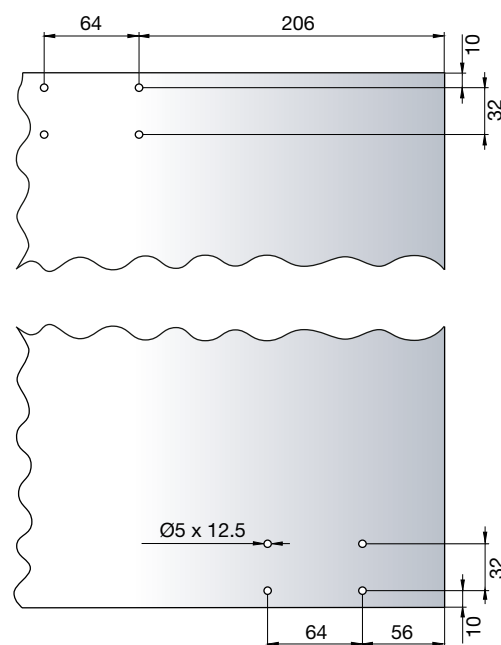
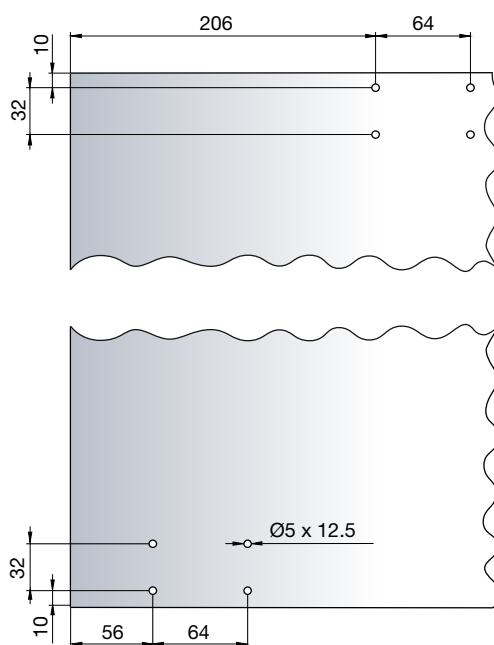
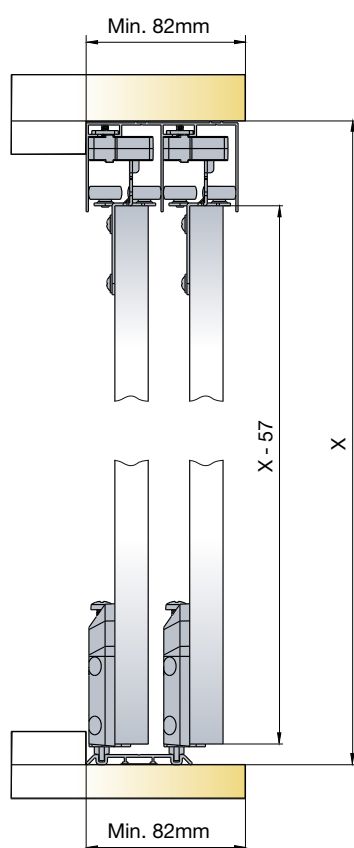


Titusoft SD100s
→ see page 4.31

- Door weight max. 50kg
- Door thickness 18-22mm
- Door material wood (chipboard, MDF, solid wood)

Mounting details

Door drilling pattern



X = space available between
top and bottom panel
X - 57 = door height


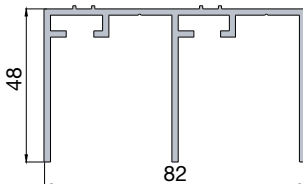


Top and bottom carriage drilling positions


Rails

For Set 200



Screws for top rail are not supplied and depend on the application (cabinet, built-in cabinet).
Bottom rail is fixed with self-adhesive tape.
Rail is pre-drilled and ready to install.

Technical details		Rail lenght	Item number
Top rail			2000 610-9692-070-K1
			2400 610-9693-070-K1
			3000 610-9694-070-K1
			<i>*other lenghts upon special request</i>
Set consists of:			
Top rail		1 pc	
Bottom rail		1 pc	

 5 sets

 5 sets

